



深圳市卓联微科技有限公司

PRODUCT MANUAL

产品选型手册





Who We Are

我们是谁

深圳市卓联微科技有限公司是ADI|TRINAMIC电机驱动控制芯片/模块中国授权代理商、台湾Rainsun陶瓷天线及微波材料授权代理商、台湾通泰 (TONTEK) 电容触摸芯片及方案授权代理商、聚洵 (GAINSIL) 高性能模拟和混合信号授权代理商、微硕 (WINSOK) 中高端场效应管授权代理商、物联网无线射频芯片/模块及其他射频元件专业分销商。

在万物互联的人工智能时代，我们坚持专业和专注的发展战略，持续为客户提供富有竞争力的产品和技术创新，帮助客户在消费电子与物联网、生命健康与智慧医疗、工业控制与人工智能、轨道交通与智能驾驶、自动化与仪器仪表等领域取得成功。

我们深信：未来社会是一个全联的社会，为社会和客户提供更加智能、友好和低成本的产品和方案，是我们存在的首要价值，我们将为之努力！

Company Vision

公司愿景

成为受社会、客户、股东、员工尊敬的公司；
有社会责任感，遵纪守法、保护环境，追求企业成长与社会发展的和谐；
尊重客户的需求与投资，通过技术创新，过程改进和员工的发展，不断地为客户创造价值；
不断追求公司经营结果的改进，为股东带来长期良好的回报；
尊重员工的个性，为他们竞争能力的提升和快乐工作而投资，并为他们的贡献给予合理的回报；

Corporate Mission

公司使命

诚信的经营与服务的持续改进与创新
领导力与员工竞争力的发展
使我们成为领先的技术服务型方案商与优秀的电子元器件通路商。

Core values

核心价值观

简单(Simplicity)
负责(Accountability)
合作(Collaboration)
尊重(Respect)
诚信(Integrity)

PRODUCT INTRODUCTION

产品介绍



ADI *Trinamic*

- 电机（步进、无刷、伺服）控制芯片
- 电机（步进、无刷、伺服）驱动芯片
- 电机三轴/六轴驱控模块
- Ether CAT接口芯片
- 工控及消费类电机驱控方案开发



- 高压低噪声高精度运放
- 零漂移运算放大器
- 低压低功耗运算放大器
- 低压纳安级运算放大器
- 高压通用比较器
- 低压纳安级比较器
- 模拟开关

RAINSUN GROUP
RainSun

- 低频陶瓷天线
- 2.4G/5.8G陶瓷天线
- GPS/3G/4G陶瓷天线
- 铁氧体材料
- 导电泡棉/导电布
- 吸波材料/屏蔽材料
- FPC软板天线
- 各频段天线定制
- NFC/无线充电相关材料



- 专注中高端场效应管15年
- N沟道/P沟道MOS管
- 双N沟道MOS管
- 双P沟道MOS管
- N+P沟道MOS管
- 型号400+, 封装30+
- 覆盖0-650V电压范围
- 应用领域广泛:
- 汽车电子、工业电子、消费电子
- 医疗器械、IOT物联、安防通讯

Jointwel

—卓联微科技—



- 2.4G射频芯片
- NRF51系列蓝牙芯片
- NRF52系列蓝牙芯片
- Nordic 蓝牙应用方案开发

Jointwel

—卓联微科技—

- 小家电/消费电子MCU方案开发
- 陶瓷天线
- 晶振
- 滤波器
- 智能家居方案开发
- 定制化触摸芯片方案
- 电机模组方案开发



- 标准按键类触摸芯片
- 防水抗干扰类触摸芯片
- 低功耗标准触摸芯片（电池供电）
- LED灯/浴室镜灯/橱柜灯触摸调光方案
- 各类小家电/消费电子触摸+MCU方案
- 防水抗干扰触摸芯片（电池/开关电源/适配器供电）



- 32F103CCT6
- 32F103CBT6
- 32F103C8T6
- 32F103C6T6
- 32F103RCT6
- 32F103R6T6
- 32F030K6T6

低功耗电容触摸芯片 (电池适用)

| | 型号 | 通道 | 封装 | 工作电压 | 待机电流 | 特征描述 |
|------------------|-------------|----|----------|-----------|----------|--------------------------|
| TTP223 TTP233 | TTP223-BA6 | 单键 | SOT23-6 | 2.0V-5.5V | 2uA@3V | 直接/锁存,高/低有效, CMOS输出 |
| | TTP233D-MA6 | 单键 | SOT23-6 | 2.4V-5.5V | 2.5uA@3V | 直接/锁存,低有效, 开漏输出 |
| | TTP233D-PH6 | 单键 | TSOT23-6 | 2.4V-5.5V | 2.5uA@3V | 直接/锁存,高/低有效, CMOS输出 |
| | TTP233D-RB6 | 单键 | DFN6 | 2.4V-5.5V | 2.5uA@3V | 直接/锁存,高/低有效, CMOS输出 |
| | TTP233D-SB6 | 单键 | DFN6 | 2.4V-5.5V | 2.5uA@3V | 直接/锁存,高/低有效, CMOS输出 |
| | TTP233H-BA6 | 单键 | SOT23-6 | 2.4V-5.5V | 2.5uA@3V | 直接/锁存,高/低有效, CMOS输出 |
| | TTP233H-HA6 | 单键 | SOT23-6 | 2.4V-5.5V | 2.5uA@3V | 直接/锁存,高/低有效, CMOS输出 |
| | TTP233H-QA6 | 单键 | SOT23-6L | 2.4V-5.5V | 4.0uA@3V | 直接/锁存,高/低有效, CMOS输出, 无休眠 |
| | TTP233H-SB6 | 单键 | DFN6 | 2.4V-5.5V | 4.0uA@3V | 直接/锁存,高/低有效, CMOS输出 |

标准触摸芯片 (开关电源适用)

| | 型号 | 通道 | 封装 | 工作电压 | 待机电流 | 特征描述 |
|--------|------------------|-----|---------|-----------|---------------------|----------------------------|
| TTP230 | TTP230-AB6 | 单键 | DFN6 | 2.0V-5.5V | 2uA@3V | 高/低有效, CMOS输出 |
| TTP11X | TTP111ASN | 单键 | SOP8 | 3.6V-6.8V | 250uA@5.0V | PWM输出高电平控制NMOS |
| | TTP118-CA6N | 单键 | SOT23-6 | 2.4V-5.5V | 4uA@3.3V/8uA@5.0V | 直接/锁存,高/低有效, CMOS输出 |
| | TTP118-A08N | 单键 | SOP8 | 2.4V-5.5V | 4uA@3.3V/8uA@5.0V | 高/低有效, PWM输出 |
| | TTP119-A0BN | 4键 | SOP16 | 2.4V-5.5V | 7uA@3.3V/14uA@5.0V | 直接/锁存,高/低有效, CMOS输出 |
| | TTP119-BB8N | 3键 | DFN8 | 2.4V-5.5V | 7uA@3.3V/14uA@5V | 直接/锁存,高/低有效, CMOS输出 |
| TTP123 | TTP123-A0BN-F001 | 6键 | SOP16 | 2.4V-5.5V | 7uA@3.3V/14uA@5.0V | 单键/直接模式, 低有效, CMOS结构 |
| | TTP123-A0BN-F002 | 6键 | SOP16 | 2.4V-5.5V | 7uA@3.3V/14uA@5.0V | 单键/直接模式, 低有效, OD结构 |
| | TTP123-A0BN-F003 | 10键 | SOP16 | 2.4V-5.5V | 9uA@3.3V/16uA@5.0V | 单键/I2C模式, INT低有效, OD结构 |
| | TTP123-A0BN-F004 | 10键 | SOP16 | 2.4V-5.5V | 9uA@3.3V/16uA@5.0V | 单键/I2C模式, INT低有效, OD结构 |
| | TTP123-A0BN-F005 | 6键 | SOP16 | 2.4V-5.5V | 7uA@3.3V/14uA@5.0V | 多键/直接模式, 低有效, CMOS结构 |
| | TTP123-A0BN-F007 | 10键 | SOP16 | 2.4V-5.5V | 9uA@3.3V/16uA@5.0V | 多键/I2C模式, INT低有效, OD结构 |
| | TTP123-ESFN-F008 | 18键 | SSOP28 | 2.4V-5.5V | 16uA@3.3V/30uA@5.0V | 多键/I2C模式, INT低有效, OD结构 |
| | TTP123-ESFN-F009 | 18键 | SSOP28 | 2.4V-5.5V | 16uA@3.3V/30uA@5.0V | 多键/I2C/不休眠模式, INT低有效, OD结构 |

标准电容触摸芯片（防水抗干扰）

| 芯片型号 | 通道数 | 型号 | 封装 | 工作电压 | 待机电流 | 特征描述 |
|--------|-----|---------|-------|-----------|----------------|-------------|
| TTY 系列 | 8键 | TTY808 | SOP16 | 3.0V-5.5V | 1.0mA@3.3V | 二位比特码输出 |
| | 8键 | TTY6751 | SOP16 | 2.7V-5.5V | 1.8mA/10uA@3.3 | SPI/两线串行 |
| | 6键 | TTY6752 | SOP16 | 2.7V-5.5V | 1.8mA/10uA@3.3 | 直接输出/低有效 |
| | 2键 | TTY6753 | SOP8 | 2.7V-5.5V | 1.8mA/10uA@3.3 | 直接输出/低有效 |
| | 2键 | TTY6755 | SOP8 | 2.7V-5.5V | 1.8mA/10uA@3.3 | 开漏/直接输出/低有效 |
| | 10键 | TTY6757 | SOP16 | 2.7V-5.5V | 1.8mA/10uA@3.3 | SPI/两线串行 |

| 型号 | 通道数 | 封装 | 工作电压 | 电流 | 特征 |
|----------|-----------|--------|-----------|--|---------------|
| JTW6001 | 1KEY TP | SOP8 | 2.0V-5.5V | @3.3V, I _{Low} ≤ 20uA (低功耗模式), I ≤ 2mA (工作模式) | 直接输出, 高有效 |
| JTW6L01 | 1KEY TP | SOP8 | 2.0V-5.5V | @3.3V, I _{Low} ≤ 20uA (低功耗模式), I ≤ 2mA (工作模式) | 锁存输出, 默认上电低电平 |
| JTW6002 | 2KEYS TP | SOP8 | 2.0V-5.5V | @3.3V, I _{Low} ≤ 20uA (低功耗模式), I ≤ 2mA (工作模式) | 直接输出, 高有效 |
| JTW6102 | 2KEYS TP | SOP8 | 2.0V-5.5V | @3.3V, I _{Low} ≤ 20uA (低功耗模式), I ≤ 2mA (工作模式) | 直接输出, 低有效 |
| JTW6003 | 3KEYS TP | SOP16 | 2.0V-5.5V | @3.3V, I _{Low} ≤ 20uA (低功耗模式), I ≤ 2mA (工作模式) | 直接输出, 高有效 |
| JTW6103 | 3KEYS TP | SOP16 | 2.0V-5.5V | @3.3V, I _{Low} ≤ 20uA (低功耗模式), I ≤ 2mA (工作模式) | 直接输出, 低有效 |
| JTW6004 | 4KEYS TP | SOP16 | 2.0V-5.5V | @3.3V, I _{Low} ≤ 20uA (低功耗模式), I ≤ 2mA (工作模式) | 直接输出, 高有效 |
| JTW6104 | 4KEYS TP | SOP16 | 2.0V-5.5V | @3.3V, I _{Low} ≤ 20uA (低功耗模式), I ≤ 2mA (工作模式) | 直接输出, 低有效 |
| JTW6S04 | 4KEYS TP | SOP8 | 2.0V-5.5V | @3.3V, I _{Low} ≤ 20uA (低功耗模式), I ≤ 2mA (工作模式) | UART串口通信 |
| JTW61T5 | 5KEYS TP | SOP16 | 2.0V-5.5V | @3.3V, I _{Low} ≤ 20uA (低功耗模式), I ≤ 2mA (工作模式) | 开漏输出 |
| JTW6C05 | 5KEYS TP | SOP16 | 2.0V-5.5V | @3.3V, I _{Low} ≤ 20uA (低功耗模式), I ≤ 2mA (工作模式) | IIC通信 |
| JTW61T6 | 6KEYS TP | SOP16 | 2.0V-5.5V | @3.3V, I _{Low} ≤ 20uA (低功耗模式), I ≤ 2mA (工作模式) | 开漏输出 |
| JTW61T6B | 6KEYS TP | SOP16 | 2.0V-5.5V | @3.3V, I _{Low} ≤ 20uA (低功耗模式), I ≤ 2mA (工作模式) | 开漏输出 |
| JTW6008 | 8KEYS TP | SSOP20 | 2.0V-5.5V | @3.3V, I _{Low} ≤ 20uA (低功耗模式), I ≤ 2mA (工作模式) | 直接输出, 高有效 |
| JTW6C08 | 8KEYS TP | SOP16 | 2.0V-5.5V | @3.3V, I _{Low} ≤ 20uA (低功耗模式), I ≤ 2mA (工作模式) | IIC通信 |
| JTW6110 | 10KEYS TP | SSOP28 | 2.0V-5.5V | @3.3V, I _{Low} ≤ 20uA (低功耗模式), I ≤ 2mA (工作模式) | 直接输出, 高有效 |
| JTW6H10 | 10KEYS TP | SSOP28 | 2.0V-5.5V | @3.3V, I _{Low} ≤ 20uA (低功耗模式), I ≤ 2mA (工作模式) | 锁存输出, 上电默认高电平 |
| JTW6012 | 12KEYS TP | SSOP28 | 2.0V-5.5V | @3.3V, I _{Low} ≤ 20uA (低功耗模式), I ≤ 2mA (工作模式) | 直接输出, 高有效 |
| JTW6112 | 12KEYS TP | SSOP28 | 2.0V-5.5V | @3.3V, I _{Low} ≤ 20uA (低功耗模式), I ≤ 2mA (工作模式) | 直接输出, 高有效 |
| JTW6C12 | 12KEYS TP | SSOP20 | 2.0V-5.5V | @3.3V, I _{Low} ≤ 20uA (低功耗模式), I ≤ 2mA (工作模式) | IIC通信 |
| JTW6C13A | 13KEYS TP | SSOP20 | 2.0V-5.5V | @3.3V, I _{Low} ≤ 20uA (低功耗模式), I ≤ 2mA (工作模式) | IIC通信 |
| JTW6C14 | 14KEYS TP | SSOP28 | 2.0V-5.5V | @3.3V, I _{Low} ≤ 20uA (低功耗模式), I ≤ 2mA (工作模式) | IIC通信 |
| JTW6S15 | 15KEYS TP | SSOP20 | 2.0V-5.5V | @3.3V, I _{Low} ≤ 20uA (低功耗模式), I ≤ 2mA (工作模式) | UART串口通信 |
| JTW6C16 | 16KEYS TP | SSOP28 | 2.0V-5.5V | @3.3V, I _{Low} ≤ 20uA (低功耗模式), I ≤ 2mA (工作模式) | IIC通信 |
| JTW6B16 | 16KEYS TP | SSOP28 | 2.0V-5.5V | @3.3V, I _{Low} ≤ 20uA (低功耗模式), I ≤ 2mA (工作模式) | 二进制BCD码输出 |
| JTW6C20 | 20KEYS TP | SSOP28 | 2.0V-5.5V | @3.3V, I _{Low} ≤ 20uA (低功耗模式), I ≤ 2mA (工作模式) | IIC通信 |
| JTW6S20 | 20KEYS TP | SSOP28 | 2.0V-5.5V | @3.3V, I _{Low} ≤ 20uA (低功耗模式), I ≤ 2mA (工作模式) | UART串口通信 |

可定制功能的电容触摸芯片

| 型号 | 应用场景 | 封装 | 工作电压 | 功能描述 |
|-----------|------------|-------|-----------|------------------------------------|
| JTW90208 | 台灯/镜前灯/小家电 | SOP8 | 2.0V-5.5V | 单键输入，一路PWM无级调光+双指示灯 |
| JTW90220 | 台灯/镜前灯/小家电 | SOP8 | 2.0V-5.5V | 单键输入，一路PWM无级调光+双指示灯，输出定时90分钟 |
| JTW90209C | 台灯/镜前灯/小家电 | SOP8 | 2.0V-5.5V | 两独立按键输入，一按键ON/OFF功能，一按键控制一路PWM输出调光 |
| JTW90216 | 台灯/镜前灯/小家电 | SOP8 | 2.0V-5.5V | 单键输入，两路PWM无级调光+双指示灯 |
| JTW90228 | 台灯/镜前灯/小家电 | SOP8 | 2.0V-5.5V | 单键输入，两路PWM无级调光+双指示灯 |
| JTW90301 | 台灯/镜前灯/小家电 | SOP16 | 2.0V-5.5V | 三独立按键一对一直接输出 |
| JTW90505 | 台灯/镜前灯/小家电 | SOP8 | 2.0V-5.5V | 单键输入，两路PWM无级调光+双指示灯 |
| JTW90707 | 台灯/镜前灯/小家电 | SOP8 | 2.0V-5.5V | 单键输入，一路PWM无级调光+一指示灯 |
| JTW90801 | 台灯/镜前灯/小家电 | SOP8 | 2.0V-5.5V | 单键输入，两路输出调色温，无调光功能 |
| JTW91201 | 台灯/镜前灯/小家电 | SOP8 | 2.0V-5.5V | 单键输入，两路PWM无级调光+双指示灯 |
| JTW91501 | 台灯/镜前灯/小家电 | SOP8 | 2.0V-5.5V | 单键输入，三路输出，无调光功能 |
| JTW91601 | 台灯/镜前灯/小家电 | SOP16 | 2.0V-5.5V | 单键输入，单路输出 |
| JTW92301 | 台灯/镜前灯/小家电 | SOP8 | 2.0V-5.5V | 单键输入，两路PWM无级调光+双指示灯，带掉电记忆 |
| JTW92501 | 台灯/镜前灯/小家电 | SOP8 | 2.0V-5.5V | 单键输入，三路输出，无调光功能 |
| JTW92601 | 台灯/镜前灯/小家电 | SOP16 | 2.0V-5.5V | 触摸滑环调节七彩色/4触摸按键+滑条输入， |
| JTW92602 | 台灯/镜前灯/小家电 | SOP16 | 2.0V-5.5V | 1 触摸滑条、5触摸按键输入。IIC串口通信输出 |
| JTW92701 | 台灯/镜前灯/小家电 | SOP8 | 2.0V-5.5V | 七彩渐变（单键，3路PWM输出） |
| JTW92801 | 台灯/镜前灯/小家电 | SOP8 | 2.0V-5.5V | 七彩色（单按键输入，3路PWM输出） |

可根据客户要求开发方案



智能镜



触摸灯



智能面板



智能锁



触摸开关



电磁炉

贴片陶瓷天线系列

| 类别 | 型号 | 尺寸 (mm) | 中心频率 | 增益 | 驻波比 | 输入阻抗 | 带宽 |
|--------------------|---------------|-----------------|----------------------------|---------|----------|-------|-----------------------------------|
| 安防 | PF2204-315 | 22*4*1.6 | 315M | 0.5dBi | 2.0(Max) | 50ohm | 5MHZ |
| | AN2405-169 | 24*5*3 | 169M | 1dBi | 2.0(Max) | 50ohm | 5MHZ |
| | AN1603-433 | 16*3.1*1.65 | 433M | 0.5dBi | 2.0(Max) | 50ohm | 8MHZ |
| | AN1603-480 | 16*3.1*1.65 | 480M | 0.5dBi | 2.0(Max) | 50ohm | 40MHZ |
| | AN1603-868 | 16*3.1*1.45 | 868M | 0.5dBi | 2.0(Max) | 50ohm | 10MHZ |
| | AN1603-916 | 16*3.1*1.70 | 915M | 0.5dBi | 2.0(Max) | 50ohm | 10MHZ |
| 2G/3G/4G/5G | MD1506 | 15*6.5*1.63 | 820-1950MHZ | -0.3dBi | 2.5(Max) | 50ohm | 1130MHZ(typ.) |
| | MD1705 | 17*5.0*1.63 | 800-2100MHZ | 1dBi | 2.5(Max) | 50ohm | 1300MHZ(typ.) |
| | RSFA-5207-100 | 52*7 FPC | 890-960MHZ 1710-1880MHZ | 2.1dBi | 2.5(Max) | 50ohm | 70MHZ/170MHZ |
| | PF-L4G3210 | 32*10*2.5 | 690-960MHZ 1700-2700MHZ | 3dBi | 2.0(Max) | 50ohm | 2010MHZ |
| GPS/北斗/ GLONASS | GPS1003 | 10*3.0*1.47 | 1575MHZ | 4.3dBi | 1.5(Max) | 50ohm | 150MHZ |
| | GPS703020 | 7*3*2 | 1575MHZ | 2.5dBi | 2(Max) | 50ohm | 20MHZ |
| | MD1705 | 17*5.0*1.63 | 800-2100MHZ | 1dBi | 2.5(Max) | 50ohm | 1300MHZ |
| 2.4G | AN1608-2440 | 1.6*0.8*0.4 | 2.4GHZ-2.48GHZ | 0.5dBi | 3.0(Max) | 50ohm | 80MHZ |
| | AN3216-245 | 3.2*1.6*1.04 | 2.45GHZ | 0.5dBi | 2.0(Max) | 50ohm | 110MHZ |
| | AN3216-280 | 3.2*1.6*1.04 | 2.8GHZ | 0.5dBi | 2.0(Max) | 50ohm | 200MHZ |
| | AN2051-245 | 5.05*2.0*1.07 | 2.45GHZ | 0.5dBi | 2.0(Max) | 50ohm | 110MHZ |
| | AN6520-245 | 6.5*2.2*1.0 | 2.45GHZ | 0.5dBi | 2.0(Max) | 50ohm | 200MHZ |
| | AN9520-245 | 9.5*2.1*1.0 | 2.45GHZ | 1.5dBi | 2.0(Max) | 50ohm | 200MHZ |
| | AN9520-270 | 9.5*2.1*1.0 | 2.70GHZ | 1.5dBi | 2.0(Max) | 50ohm | 200MHZ |
| 2.4/5.8G | AN3216 | 3.2*1.6*1.04 | 2.45GHZ&5-6GHZ | 0.5dBi | 2.0(Max) | 50ohm | 2.45GHZ:110MHZ 5-6GHZ:500MHZ |
| | AN6040 | 6*4*2.6 | 2.45GHZ&5-5.8GHZ | 0.5dBi | 2.0(Max) | 50ohm | 2.45GHZ:150MHZ 5-5.8GHZ:500MHZ |
| | AN1003 | 10.3*3.0*1.6 | 2.45GHZ&5-6GHZ | 1.0dBi | 2.0(Max) | 50ohm | 2.45GHZ:70MHZ 5-6GHZ:500MHZ |
| | PF1004 | 10*4.0*3.0 | 2.45GHZ&5-6GHZ | 3dBi | 2.0(Max) | 50ohm | 2.45GHZ:150MHZ 5-6GHZ:500MHZ |
| 4G UWB | AN3216-UWB | 3.2*1.6*1.04 | 3.7GHZ-8GHZ | 0.5dBi | 2.0(Max) | 50ohm | 4300MHZ |
| | AN703020 | 7*3*2 | 2.4/4/5-8GHz | 1dBi | 2.0(Max) | 50ohm | 6000MHZ |
| | AN1503-UWB | 15*3.0*1.27 | 3GHZ-5GHZ | 0.5dBi | 2.0(Max) | 50ohm | 2000MHZ |
| | PL1505 | 15.39*5.09*1.37 | 2.4GHZ-4.5GHZ | 2dBi | 2.0(Max) | 50ohm | 2000MHZ |

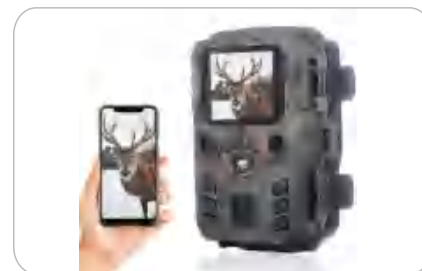
★★可定制各种频率、尺寸陶瓷天线★★



记录仪



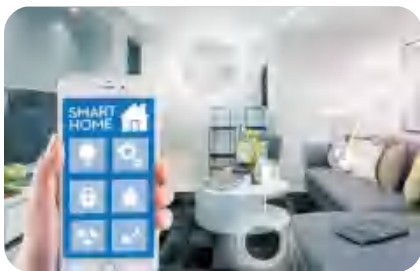
蓝牙音箱



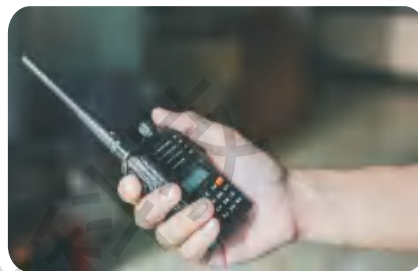
户外相机

贴片陶瓷天线系列

| 类别 | 型号 | 尺寸(mm)长宽高 | 频率范围 | 峰值增益 | 平均增益 | 驻波比 | 带宽 |
|--|--------------------|-------------|-----------|------|---------|-----------|---------|
| 安防 | JTWR78AN7020L8R | 7*2*0.8 | 779-787 | -2 | -5 | 2.0 max | 8MHZ |
| | JTWR86AN7020L20R | 7*2*0.8 | 858-878 | -1 | -4 | 3.0 max | 20MHZ |
| | JTWR90AN7020L26R | 7*2*0.8 | 902-928 | -1 | -4 | 2.0 max | 26MHZ |
| GPS | JTW1G57AN7020A40R | 7*2*0.8 | 1555-1595 | -1.5 | -2.5 | 3.0 max | 40MHZ |
| 2.4G蓝牙 WLAN ZigBee WiFi Bluetooth IoT | JTW2G45AN1005T100R | 1*0.5*0.37 | 2400-2500 | 1 | -1.5 | 3.0 max | 100MHZ |
| | JTW2G44AN1608A80R | 1.6*0.8*0.4 | 2400-2480 | -0.5 | -2 | 2.0 max | 80MHZ |
| | JTW2G44AN1608B80R | 1.6*0.8*0.4 | 2400-2480 | 0.5 | -2 | 3.0 max | 80MHZ |
| | JTW2G44AN1608T80R | 1.6*0.8*0.4 | 2400-2480 | 0.5 | -2 | 3.0 max | 80MHZ |
| | JTW2G45AN3216A100R | 3.2*1.6*1.3 | 2400-2500 | 0.5 | -0.5 | 2.0 max | 100MHZ |
| | JTW2G45AN3216B100R | 3.2*1.6*1.2 | 2400-2500 | 1.5 | -1 | 3.0 max | 100MHZ |
| | JTW2G45AN3216T100R | 3.2*1.6*0.5 | 2400-2500 | 0.9 | -3.1 | 2.0 max | 100MHZ |
| | JTW2G45AN5010A100R | 5*1*1 | 2400-2500 | 0.1 | 0.5 | 2.0 max | 100MHZ |
| | JTW2G45AN5020A100R | 5*2*1.1 | 2400-2500 | 0 | -1 | 2.0 max | 100MHZ |
| | JTW2G45AN5020E100R | 5*2*2 | 2400-2500 | 0 | -1.5 | 2.0 max | 100MHZ |
| | JTW2G45AN6020E100R | 6*2*1.2 | 2400-2500 | 2.1 | 1 | 2.0 max | 100MHZ |
| | JTW2G45AN7020A100R | 7*2*1.2 | 2400-2500 | 2 | 0.5 | 2.0 max | 100MHZ |
| | JTW2G50AN8010A400R | 8*1*1 | 2300-2700 | 2.5 | 0.5 | 3.0 max | 400MHZ |
| JTW2G45AN9520A100R | 9.5*2*1.2 | 2400-2500 | 3 | 1 | 3.0 max | 100MHZ | |
| 2.45/5G 双频 wifi天线 | JTW2455AD1608AR | 1.6*0.8*0.4 | 2400-2480 | 1 | -3.5 | 3.0 max | 80MHZ |
| | | | 5150-5850 | 4 | -2.5 | | 600MHZ |
| 5.8G天线 | JTW5G50AN1005A750R | 1*0.5*0.37 | 5150-5900 | 1 | -3 | 2.0 max | 750MHZ |
| | JTW5G50AN3216A725R | 3.2*1.6*1.3 | 4900-5900 | 2 | -2.5 | 500mW max | 1000MHZ |



物联网产品



通讯产品



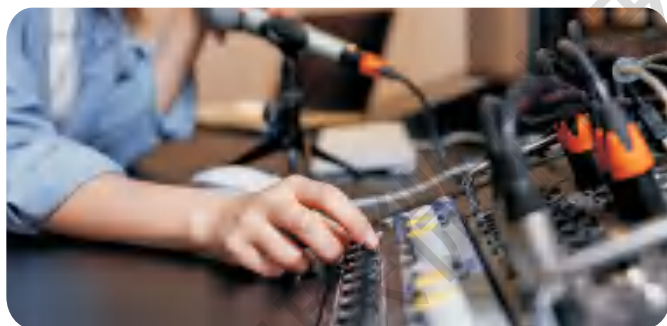
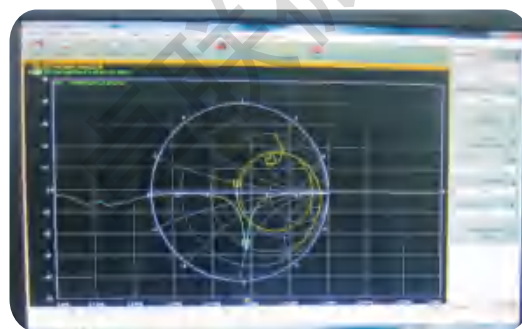
智能穿戴产品

低通滤波器

| 型号 | 封装 | 阻抗 (Ohm) | 频率范围(MHZ) | 介入损耗 (dB) | 参考应用 |
|---------------------|------|----------|-----------|-----------|---|
| JTWR50LF2012EA500R | 0805 | 50 | 0-500 | 0.7 dB | 遥控器, 门控, 车锁, 定位服务 |
| JTWR86LF2012AB20R | 0805 | 50 | 858-878 | 0.5 dB | 安防, 门控, IOT智能家居 |
| JTWR92LF2012AB26R | 0805 | 50 | 863-960 | 0.7 dB | 安防, 门控, IOT智能家居 |
| JTWR92LF2012AB26R | 0805 | 50 | 902-928 | 0.5 dB | 安防, 门控, IOT智能家居 |
| JTW2G45LF1608BB100R | 0603 | 50 | 2400-2500 | 0.5 dB | Bluetooth(BLE),IoT,WiFi,V2X,Wearables,ISM |

带通滤波器

| 型号 | 封装 | 阻抗 (Ohm) | 频率范围(MHZ) | 介入损耗 (dB) | 参考应用 |
|----------------------|------|----------|-----------|-----------|------------------------|
| JTW2G45BF1005KD100R | 0402 | 50 | 2400-2500 | 1.9 dB | 车载设备蓝牙应用 |
| JTW2G45BF1411LN100R | 0504 | 50 | 2400-2500 | 1.0 dB | NB-IOT |
| JTW2G45BF1608LD100R | 0603 | 50 | 2400-2500 | 1.5 dB | TWS耳机带通滤波 |
| JTW2G45BF1608LB100R | 0603 | 50 | 2400-2500 | 2.5 dB | 2.45GHz WLAN/Bluetooth |
| JTW2G45BF2012FD100R | 0805 | 50 | 2400-2500 | 2.2 dB | 2.45GHz WLAN/Bluetooth |
| JTW2G45BF2012LD100R | 0805 | 50 | 2400-2500 | 1.5 dB | 2.45GHz WLAN/Bluetooth |
| JTW2G45BF2520BC100R | 2520 | 50 | 2400-2500 | 1.5 dB | 2.45GHz WLAN/Bluetooth |
| JTW5G50BF2012BD975R | 0805 | 50 | 4900-5875 | 2 dB | 5G路由器 WLAN |
| JTW5G50BF2012EC1020R | 0805 | 50 | 4900-5920 | 1.5dB | 5G路由器 WIFI 车载应用 |



物联网芯片系列

| 型号 | 封装 | RAM | FALSH | 晶振 | 天线/滤波器 |
|--------------------|-------|-----|-------|-----|---------------------------|
| NRF24L01+ | QFN20 | - | - | 16M | AN9520/JTW2G45FM1608N24XR |
| NRF24LE1-F16Q32-R | QFN32 | - | - | 16M | AN9520/JTW2G45FM1608N24XR |
| NRF24LU1P-F32Q32-R | QFN32 | - | - | - | AN9520/JTW2G45FM1608N24XR |
| NRF905-REEL | QFN32 | - | - | - | AN1603-868M/AN1603-433M |

| 型号 | 封装 | RAM | FALSH | 晶振 | 天线/滤波器 |
|---------------|-------|-------|--------|-------------|---------------------------|
| NRF51802-QFAA | QFN48 | 16 KB | 256 KB | 16M/32.768K | AN3216/JTW2G45FM1608N51XR |
| NRF51822-QFAA | QFN48 | 16 KB | 256 KB | 16M/32.768K | AN3216/JTW2G45FM1608N51XR |
| NRF51822-QFAB | QFN48 | 16 KB | 128 KB | 16M/32.768K | AN3216/JTW2G45FM1608N51XR |
| NRF51822-QFAC | QFN48 | 32 KB | 256 KB | 16M/32.768K | AN3216/JTW2G45FM1608N51XR |
| NRF51822-CEAA | BGA | 16 KB | 256 KB | 16M/32.768K | AN3216/JTW2G45FM1608N51XR |

| 型号 | 封装 | RAM | FALSH | 晶振 | 天线/滤波器 |
|---------------|---------|--------|--------|-------------|---------------------------|
| NRF52810-QFAA | QFN48 | 24 KB | 192 KB | 32M/32.768K | AN1608/JTW2G45LM1005N52XR |
| NRF52810-QCAA | QFN48 | 24 KB | 192 KB | 32M/32.768K | AN1608/JTW2G45LM1005N52XR |
| NRF52811-QFAA | QFN32 | 24 KB | 192 KB | 32M/32.768K | AN1608/JTW2G45LM1005N52XR |
| NRF52811-QCAA | QFN32 | 24 KB | 192 KB | 32M/32.768K | AN1608/JTW2G45LM1005N52XR |
| NRF52820-QDAA | QFN40 | 32KB | 256KB | 32M/32.768K | AN1608/JTW2G45LM1005N52XR |
| NRF52832-QFAA | QFN48 | 64 KB | 512 KB | 32M/32.768K | AN1608/JTW2G45LM1005N52XR |
| NRF52832-QFAB | QFN48 | 32 KB | 256 KB | 32M/32.768K | AN1608/JTW2G45LM1005N52XR |
| NRF52832-CIAA | WLSP-48 | 64 KB | 512 KB | 32M/32.768K | AN1608/JTW2G45LM1005N52XR |
| NRF52833-QIAA | QFN73 | 128KB | 512KB | 32M/32.768K | AN1608/JTW2G45LM1005N52XR |
| NRF52833-QDAA | QFN40 | 128KB | 512KB | 32M/32.768K | AN1608/JTW2G45LM1005N52XR |
| NRF52840-QIAA | AQFN-73 | 256 KB | 1M KB | 32M/32.768K | AN1608/JTW2G45LM1005N52BR |

PA/LNA系列

| 型号 | 品牌 | 封装 | SPQ(pcs/reel) | 备注 |
|------------|--------|--------|---------------|-------------------------|
| CC2591RGVR | TI | VQFN16 | 2500/reel | 与TI蓝牙芯片配套 |
| CC2592RGVR | TI | VQFN16 | 2500/reel | 与TI蓝牙芯片配套 |
| RFX2401C | RFAXIC | VQFN16 | 2500/reel | 与TI/Nordic蓝牙芯片配套 |
| RFX2402 | RFAXIC | VQFN16 | 2500/reel | 与TI/Nordic蓝牙芯片配套 |
| RFX2411 | RFAXIC | VQFN20 | 2500/reel | 与TI/Nordic蓝牙芯片配套 |
| RT201 | KCT | QFN16 | 5000/RL | 与Nordic蓝牙芯片配套兼容RFX2401C |
| RT202 | KCT | QFN16 | 5000/RL | 与Nordic蓝牙芯片配套兼容RFX2402C |

晶振

| 型号 | 品牌 | 封装 | 频率 | 负载电容 | 频差 |
|--------------------|-------|---------|-------------|--------|--------|
| JTW1A320000810 | JTW | 1612 | 32MHZ | 8PF | ±10PPM |
| JTW2A320000810 | JTW | 2016 | 32MHZ | 8PF | ±10PPM |
| JTW2A320000910 | JTW | 2016 | 32MHZ | 9PF | ±10PPM |
| JTW2A320001210 | JTW | 2016 | 32MHZ | 12PF | ±10PPM |
| JTW2B320000810 | JTW | 2520 | 32MHZ | 8PF | ±10PPM |
| JTW2B320000910 | JTW | 2520 | 32MHZ | 9PF | ±10PPM |
| JTW2B320001210 | JTW | 2520 | 32MHZ | 12PF | ±10PPM |
| JTW3A320000810 | JTW | 3225 | 32MHZ | 8PF | ±10PPM |
| JTW3A320000910 | JTW | 3225 | 32MHZ | 9PF | ±10PPM |
| JTW3A320001210 | JTW | 3225 | 32MHZ | 12PF | ±10PPM |
| JTW2A160000810 | JTW | 2016 | 16MHZ | 8PF | ±10PPM |
| JTW2A160000910 | JTW | 2016 | 16MHZ | 9PF | ±10PPM |
| JTW2A160001210 | JTW | 2016 | 16MHZ | 12PF | ±10PPM |
| JTW2B160000810 | JTW | 2520 | 16MHZ | 8PF | ±10PPM |
| JTW2B160000910 | JTW | 2520 | 16MHZ | 9PF | ±10PPM |
| JTW2B160001210 | JTW | 2520 | 16MHZ | 12PF | ±10PPM |
| JTW3A160000810 | JTW | 3225 | 16MHZ | 8PF | ±10PPM |
| JTW3A160000910 | JTW | 3225 | 16MHZ | 9PF | ±10PPM |
| JTW3A160001210 | JTW | 3225 | 16MHZ | 12PF | ±10PPM |
| JTW2A240001210 | JTW | 2016 | 24MHZ | 12PF | ±10PPM |
| JTW2B240000910 | JTW | 2520 | 24MHZ | 9PF | ±10PPM |
| JTW2A260000910 | JTW | 2016 | 26MHZ | 9PF | ±10PPM |
| JTW3A260000910 | JTW | 3225 | 26MHZ | 9PF | ±10PPM |
| JTW3A260001210 | JTW | 3225 | 26MHZ | 12PF | ±10PPM |
| JTW2B400001210 | JTW | 2520 | 40MHZ | 12PF | ±10PPM |
| JTW3A400001210 | JTW | 3225 | 40MHZ | 12PF | ±10PPM |
| JTW2B120001210 | JTW | 2520 | 12MHZ | 12PF | ±10PPM |
| JTW3A120001210 | JTW | 3225 | 12MHZ | 12PF | ±10PPM |
| JTW3A120002010 | JTW | 3225 | 12MHZ | 20PF | ±10PPM |
| JTW3A384001010 | JTW | 3225 | 38.4MHZ | 10PF | ±10PPM |
| JTW3A135602020 | JTW | 3225 | 13.56MHZ | 20PF | ±10PPM |
| JTW3A271201210 | JTW | 3225 | 27.12MHZ | 12PF | ±10PPM |
| JTW3A250001210 | JTW | 3225 | 25MHZ | 12PF | ±10PPM |
| JTW3A080001210 | JTW | 3225 | 8MHZ | 12PF | ±10PPM |
| JTW5A080002020 | JTW | 5032 | 8MHZ | 20PF | ±20PPM |
| JTW9S080002010 | JTW | SMD-49S | 8MHZ | 20PF | ±10PPM |
| JTW7S135212020 | JTW | 7SMD | 13.52127MHZ | 20PF | ±20PPM |
| JTW3A135212010 | JTW | 3225 | 13.52127MHZ | 20PF | ±10PPM |
| JTW2Y327681210 | JTW | 2*6 | 32.768KHZ | 12.5PF | ±10PPM |
| JTW3B327681220 | JTW | 3215 | 32.768KHZ | 12.5PF | ±20PPM |
| JTW3B327680920 | JTW | 3215 | 32.768KHZ | 9PF | ±20PPM |
| FC-12M 32.768KHZ | EPSON | 2012 | 32.768KHZ | 12.5PF | ±20PPM |
| NX3215SA 32.768KHZ | NDK | 3215 | 32.768KHZ | 9PF | ±20PPM |
| NX3215SA 32.768KHZ | NDK | 3215 | 32.768KHZ | 12.5PF | ±20PPM |

运算放大器

| 类别 | 型号 | 通道 | 工作电压 | "增益带宽 (Mhz)" | "压摆率 (V/μs)" | 通道静态电流 | 输入偏置电流 | "输入失调电压 (mV)" | Noise @1KHzTyp (nV/√Hz) | 轨到轨输入/输出 | 封装 |
|---------------|--------|---------|---------|--------------|--------------|--------|--------|---------------|-------------------------|-----------------|-------------------------|
| 高压通用运算放大器 | LM321 | 1 | 3~28 | 1 | 0.2 | 120uA | 45nA | 5mV | / | N/Y | SOT23-5 |
| | LM358 | 2 | 3~28 | 1 | 0.2 | 120uA | 45nA | 5mV | / | N/Y | SOP-8/MSOP-8 |
| | LM324 | 4 | 3~28 | 1 | 0.2 | 120uA | 45nA | 5mV | / | N/Y | SOP-14 |
| | LM321H | 1 | 3~36 | 1 | 0.2 | 250uA | 20nA | 5mV | / | N/Y | SOT23-5 |
| | LM358H | 2 | 3~36 | 1 | 0.2 | 250uA | 20nA | 5mV | / | N/Y | SOP-14/TSSOP-14 |
| | LM324H | 4 | 3~36 | 1 | 0.2 | 250uA | 20nA | 5mV | / | N/Y | SOP-8/MSOP-8 |
| 高压低噪声高精度运算放大器 | GS2261 | 1 | 3.3~36 | 11 | 23 | 2.7mA | 100pA | 0.1mV | / | N/Y | SOT23-5 |
| | GS2262 | 2 | 3.3~36 | 11 | 23 | 2.7mA | 100pA | 0.1mV | / | N/Y | SOP-8/MSOP-8 |
| | GS2264 | 4 | 3.3~36 | 11 | 23 | 2.7mA | 100pA | 0.1mV | / | N/Y | SOP-14/TSSOP-14 |
| | GS2231 | 1 | 3~36 | 3.5 | 13 | 0.72mA | 100pA | 0.1mV | / | N/Y | SOT23-5 |
| | GS2232 | 2 | 3~36 | 3.5 | 13 | 0.72mA | 100pA | 0.1mV | / | N/Y | SOP-8/MSOP-8 |
| | GS2234 | 4 | 3~36 | 3.5 | 13 | 0.72mA | 100pA | 0.1mV | / | N/Y | SOP-14/TSSOP-14 |
| 高速运算放大器 | GS8051 | 1 | 2.5~5.5 | 250 | 151 | 2800pA | 1pA | 8mV | 4.9 | N/Y | SOT-23-5/SC70-5 |
| | GS8052 | 2 | 2.5~5.5 | 250 | 151 | 2800pA | 1pA | 8mV | 4.9 | N/Y | SOP-8/DFN-8(2*2)/MSOP-8 |
| | GS8054 | 4 | 2.5~5.5 | 250 | 151 | 2800pA | 1pA | 8mV | 4.9 | N/Y | SOP-14/TSSOP-14 |
| | GS8091 | 1 | 2.5~5.5 | 350 | 232 | 4200pA | 1pA | 8mV | 4.3 | N/Y | SOT-23-5/SC70-5 |
| | GS8092 | 2 | 2.5~5.5 | 350 | 232 | 4200pA | 1pA | 8mV | 4.3 | N/Y | SOP-8/DFN-8(2*2)/MSOP-8 |
| | GS8094 | 4 | 2.5~5.5 | 350 | 232 | 4200pA | 1pA | 8mV | 4.3 | N/Y | SOP-14/TSSOP-14 |
| 高压低噪声运算放大器 | GS4558 | 2 | 4~36 | 5.5 | 1.8 | 2.5mA | 70nA | 5mV | 10 | N/N | SOP-8/DIP8 |
| | GS4580 | 2 | 4~36 | 15 | 7 | 4mA | 150nA | 3mV | / | N/N | SOP-8/MSOP-8/DIP-8 |
| 高精度通用运算放大器 | GS321A | 1 | 2.1~5.5 | 1 | 0.6 | 40uA | 1pA | 0.4mV | 27 | Y/Y | SOT-23-5/SC70-5 |
| | GS358A | 2 | 2.1~5.5 | 1 | 0.6 | 40uA | 1pA | 0.4mV | 27 | Y/Y | SOP-8/MSOP-8 |
| 零漂移运算放大器 | GS8331 | 1 | 1.8~5.5 | 0.35 | 0.2 | 25uA | 20pA | 10uV | 70 | Y/Y | SOT-23-5/SC70-5 |
| | GS8332 | 2 | 1.8~5.5 | 0.35 | 0.2 | 25uA | 20pA | 10uV | 70 | Y/Y | SOP-8/MSOP-8 |
| | GS8334 | 4 | 1.8~5.5 | 0.35 | 0.2 | 25uA | 20pA | 10uV | 70 | Y/Y | SOP-14/TSSOP-14 |
| | GS8551 | 1 | 1.8~5.5 | 1.8 | 0.95 | 180uA | 20pA | 30uV | 38 | Y/Y | SOT-23-5/SC70-5 |
| | GS8552 | 2 | 1.8~5.5 | 1.8 | 0.95 | 180uA | 20pA | 30uV | 38 | Y/Y | SOP-8/MSOP-8 |
| | GS8554 | 4 | 1.8~5.5 | 1.8 | 0.95 | 180uA | 20pA | 30uV | 38 | Y/Y | SOP-14/TSSOP-14 |
| | GS8591 | 1 | 1.8~5.5 | 4.5 | 2.5 | 550uA | 20pA | 30uV | 30 | Y/Y | SOT-23-5/SC70-5 |
| | GS8592 | 2 | 1.8~5.5 | 4.5 | 2.5 | 550uA | 20pA | 30uV | 30 | Y/Y | SOP-8/MSOP-8 |
| GS8594 | 4 | 1.8~5.5 | 4.5 | 2.5 | 550uA | 20pA | 30uV | 30 | Y/Y | SOP-14/TSSOP-14 | |



授权代理商

运算放大器

| 类别 | 型号 | 通道 | 工作电压 | "增益带宽 (Mhz)" | "压摆率 (V/μs)" | 通道静态电流 | 输入偏置电流 | "输入失调电压(mV)" | Noise @1KHzTyp (nV/√Hz) | 轨到轨输入/输出 | 封装 | / |
|------------|-----------|----|---------|--------------|--------------|--------|--------|---------------------------------------|-------------------------|----------|-----------------------------------|---|
| 低功耗通用运算放大器 | GS321 | 1 | 2.1~5.5 | 1MHz | 0.6V/μs | 40μA | 1pA | 3.5mV | 27 | Y/Y | SOT23-5/SC70-5 | / |
| | GS321B-TR | 1 | 2.1~5.5 | 1MHz | 0.6V/μs | 40μA | 1pA | 1~4mV | 27 | Y/Y | SOT23-5/SC70-5 | / |
| | GS324 | 4 | 2.1~5.5 | 1MHz | 0.6V/μs | 40μA | 1pA | 3.5mV | 27 | Y/Y | SOP-14/TSSOP-14 | / |
| | GS358 | 2 | 2.1~5.5 | 1MHz | 0.6V/μs | 40μA | 1pA | 3.5mV | 27 | Y/Y | SOP-8/MSOP-8/DIP-8/DFN-8(2*2) | / |
| | GS358B | 2 | 2.1~5.5 | 1MHz | 0.6V/μs | 40μA | 1pA | 1~4mV | 27 | Y/Y | SOP-8/MSOP-8 | / |
| | GS8358 | 2 | 2.1~5.5 | 1MHz | 0.6V/μs | 40μA | 1pA | 3.5mV(channel 1) 10~5mV(channel 2) | 27 | Y/Y | SOP-8/MSOP-8 | / |
| | LMV321 | 1 | 2.1~5.5 | 1MHz | 0.6V/μs | 40μA | 1pA | 3.5mV | 27 | Y/Y | SOT23-5 | / |
| | LMV358 | 2 | 2.1~5.5 | 1MHz | 0.6V/μs | 40μA | 1pA | 3.5mV | 27 | Y/Y | SOP-8 | / |
| 低功耗运算放大器 | GS8521 | 1 | 2.1~5.5 | 150kHz | 0.07V/μs | 5.5μA | 1pA | 3.5mV | 85 | Y/Y | SOT23-5 | / |
| | GS8522 | 2 | 2.1~5.5 | 150kHz | 0.07V/μs | 5.5μA | 1pA | 3.5mV | 85 | Y/Y | SOP-8/MSOP-8 | / |
| | GS8524 | 4 | 2.1~5.5 | 150kHz | 0.07V/μs | 5.5μA | 1pA | 3.5mV | 85 | Y/Y | SOP-14/TSSOP-14 | / |
| | GS8532 | 2 | 2.1~5.5 | 500kHz | 0.2V/μs | 18μA | 1pA | 3.5mV | 33 | Y/Y | SOP-8/MSOP-8 | / |
| 低压低功耗运算放大器 | GS6001 | 1 | 1.8~6 | 1MHz | 0.8V/μs | 75μA | 1pA | 3.5mV | 27 | Y/Y | SOT23-5/SC70-5 | / |
| | GS6002 | 2 | 1.8~6 | 1MHz | 0.8V/μs | 75μA | 1pA | 3.5mV | 27 | Y/Y | SOP-8/MSOP-8 | / |
| | GS6004 | 4 | 1.8~6 | 1MHz | 0.8V/μs | 75μA | 1pA | 3.5mV | 27 | Y/Y | SOP-14/TSSOP-14 | / |
| 低压低噪声运算放大器 | GS8600 | 2 | 2.1~5.5 | 11MHZ | 9V/μs | 1100μA | 1pA | 3.5mV | 11.5 | Y/Y | DFN-8(2*2) | N |
| | GS8621 | 1 | 2.1~5.5 | 3MHZ | 1.66V/μs | 250μA | 1pA | 3.5mV | 18 | Y/Y | SOT23-5/SC70-5 | N |
| | GS8622 | 2 | 2.1~5.5 | 3MHZ | 1.66V/μs | 250μA | 1pA | 3.5mV | 18 | Y/Y | SOP-8/MSOP8 | N |
| | GS8624 | 4 | 2.1~5.5 | 3MHZ | 1.66V/μs | 250μA | 1pA | 3.5mV | 18 | Y/Y | SOP-14/TSSOP-14 | N |
| | GS8631 | 1 | 2.1~5.5 | 6MHZ | 4.2V/μs | 470μA | 1pA | 3.5mV | 13 | Y/Y | SOT23-5/SC70-5/SOP-8 | N |
| | GS8632 | 2 | 2.1~5.5 | 6MHZ | 4.2V/μs | 470μA | 1pA | 3.5mV | 13 | Y/Y | SOP-8/MSOP-8 | N |
| | GS8634 | 4 | 2.1~5.5 | 6MHZ | 4.2V/μs | 470μA | 1pA | 3.5mV | 13 | Y/Y | SOP-14/TSSOP-14 | N |
| | GS8721 | 1 | 2.1~5.5 | 11MHZ | 9V/μs | 1100μA | 1pA | 3.5mV | 11.5 | Y/Y | SOT23-5/SC70-5 | N |
| | GS8722 | 2 | 2.1~5.5 | 11MHZ | 9V/μs | 1100μA | 1pA | 3.5mV | 11.5 | Y/Y | SOP-8/MSOP8/DIP-8/DFN2*2-8/TSSOP8 | N |
| | GS8724 | 4 | 2.1~5.5 | 11MHZ | 9V/μs | 1100μA | 1pA | 3.5mV | 11.5 | Y/Y | SOP-14/TSSOP-14 | N |
| 低压纳安级运算放大器 | GS8041 | 1 | 1.4~5.5 | 14.5kHz | 6V/mS | 600nA | 1pA | 3mV | N | Y/Y | SOT23-5/SC70-5 | / |
| | GS8042 | 2 | 1.4~5.5 | 14.5kHz | 6V/mS | 600nA | 1pA | 3mV | N | Y/Y | SOP-8/MSOP-8 | / |
| | GS8044 | 4 | 1.4~5.5 | 14.5kHz | 6V/mS | 600nA | 1pA | 3mV | N | Y/Y | SOP-14/TSSOP-14 | / |
| | GS8045 | 1 | 1.4~5.5 | 100kHz | 40V/mS | 600nA | 1pA | 3mV | N | Y/Y | SOT23-5/SC70-5 | / |
| | GS8141 | 1 | 1.4~5.5 | 7kHz | 3V/mS | 350nA | 1pA | 3mV | N | Y/Y | SOT23-5/SC70-5 | / |
| | GS8142 | 2 | 1.4~5.5 | 7kHz | 3V/mS | 350nA | 1pA | 3mV | N | Y/Y | SOP-8/MSOP-8 | / |

比较器

| 类别 | Product No | Channel | "Power Supply (V)" | Iq/CH | "Maxim un Vos" | "tPD" | "Vref (mV)" | Logic Output |
|----------|------------|---------|--------------------|--------|----------------|-------|-------------|----------------|
| 高压通用比较器 | GS331 | 1 | 2~36 | 700uA | 5mV | 1.3uS | / | Open-Collector |
| | GS393 | 2 | 2~36 | 700uA | 5mV | 1.3uS | / | Open-Collector |
| | GS339 | 4 | 2~36 | 700uA | 5mV | 1.3uS | / | Open-Collector |
| 低压纳安级比较器 | GS8705 | 2 | 1.4~5.5 | 325nA | 3mV | 6.2uS | / | Push-Pull |
| | GS8709 | 1 | 1.4~5.5 | 325nA | 3mV | 6.2uS | / | Push-Pull |
| | GS8011 | 1 | 1.4~5.5 | 208nA | 3mV | 13uS | / | Push-Pull |
| | GS8021 | 1 | 1.6~5.5 | 390nA | 3mV | 13uS | 1237 | Push-Pul |
| 低压高速比较器 | GS8740 | 1 | 2.7~5.5 | 155uA | 5mV | 21nS | / | Push-Pull |
| | GS8741 | 1 | 2.7~5.5 | 155uA | 5mV | 21nS | / | Push-Pull |
| | GS8742 | 2 | 2.7~5.5 | 155uA | 5mV | 21nS | / | Push-Pull |
| | GS8743 | 1 | 2.7~5.5 | 1300uA | 5mV | 6nS | / | Push-Pull |
| | GS8746 | 1 | 2.7~5.5 | 22uA | 5mV | 91nS | / | Push-Pull |
| | GS8747 | 1 | 2.7~5.5 | 22uA | 5mV | 91nS | / | Push-Pul |
| | GS8748 | 2 | 2.7~5.5 | 22uA | 5mV | 91nS | / | Push-Pull |
| | GS8749 | 1 | 2.7~5.5 | 22uA | 5mV | 91nS | / | Open-Drain |
| | GS8706 | 1 | 1.6~5.5 | 2.4uA | 3mV | 900nS | 1237 | Push-Pull |
| | GSV331 | 1 | 1.8~5.5 | 46uA | 3mV | 70nS | / | Push-Pul |
| | GSV331R | 1 | 1.8~5.5 | 46uA | 3mV | 70nS | / | Open-Drain |
| | GSV332 | 2 | 1.8~5.5 | 46uA | 3mV | 70nS | / | Push-Pull |

模拟开关

| | Product No | Channel | Power Supply (V) | Bandwidth (MHZ) | RON(Ω) | Iq(max)/ CH(uA) | Package |
|------|------------|---------|------------------|-----------------|--------|-----------------|-------------------------|
| 模拟开关 | GS4157B | 1 | 1.8~5.5 | 80 | 0.8 | 1 | SC70-6/TDFN-6 |
| | GS3005 | 2 | 1.8~5.5 | 80 | 0.8 | 1 | TDFN-3x3-10L/MSOP-10 |
| | GS3101 | 1 | 1.8~5.5 | 120 | 2.5 | 1 | SOT23-6/SC70-6 |
| | GS3221 | 1 | 1.8~5.5 | 100 | 1.5 | 1 | SOT23-6/SC70-6 |
| | GS3157 | 1 | 1.8~5.5 | 300 | 4 | 1 | SOT23-6/SC70-6 |
| | GS7227 | 1 | 1.8~43 | 480 | 5 | 1 | MSOP10/UTQFN1.8x1.4-10L |

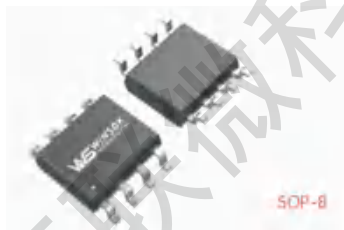


授权代理商

MOS管/SOP封装系列

| 型号 Part number | 配置 Configuration | 沟道 Type | 最大漏极电压 VDS (V) | 最大栅源承受电压 VGS ±(V) | 最大漏源电流 ID (A) Max. | 开启阈值电压 RDS(ON)(mΩ) | | | 导通电阻 VGS(th)(v) | | | | 输入电容 Ciss (pF) | 输出电容 Coss (pF) | 反向传输电容 Crss (pF) | 封装 Package |
|-------------------|---------------------|------------|----------------------|-------------------------|--------------------------|-----------------------|-------|------|--------------------|------|-------|------|----------------------|----------------------|------------------------|---------------|
| | | | | | | Min. | Typ. | Max. | @10V | | @4.5V | | | | | |
| | | | | | | | | | Typ. | Max. | Typ. | Max. | | | | |
| WSP8205 | Dual | N-Ch | 20 | 12 | 6 | 0.4 | 0.7 | 1 | 20 | 27 | 23 | 30 | 550 | 100 | 85 | TSSOP-8 |
| WSP8810A | Dual+ESD | N-Ch | 20 | 12 | 7 | 0.4 | 0.7 | 1 | 14.5 | 21 | 15 | 22 | 1292 | 163 | 85 | TSSOP-8 |
| WSP2088 | Dual+ESD | N-Ch | 20 | 12 | 7.5 | 0.5 | 0.7 | 1 | - | - | 11.5 | 14.5 | 900 | 175 | 160 | TSSOP-8 |
| WSP8814 | Dual+ESD | N-Ch | 20 | 12 | 9 | 0.5 | 0.75 | 1.2 | - | - | 7.6 | 9.5 | 2000 | 370 | 350 | TSSOP-8 |
| WSP4430 | Single | N-Ch | 30 | 20 | 20 | 1 | 1.5 | 2 | 4 | 6 | 6 | 8 | 3234 | 456 | 329 | SOP-8 |
| WSP4016 | Single | N-Ch | 40 | 20 | 15.5 | 1 | 1.8 | 2.5 | 8.5 | 11.5 | 11 | 14.5 | 1125 | 132 | 70 | SOP-8 |
| WSP6020 | Single | N-Ch | 60 | 20 | 18 | 1 | 2 | 3 | 7 | 9 | 8 | 12 | 3760 | 340 | 200 | SOP-8 |
| WSP16N10 | Single | N-Ch | 100 | 20 | 16 | 1.4 | 1.7 | 2.5 | 8.9 | 11 | 9.9 | 13 | 4000 | 898 | 39 | SOP-8 |
| WSP08N15 | Single | N-Ch | 150 | 25 | 8 | - | - | - | 43 | 60 | 60 | 70 | 1210 | 105 | 55 | SOP-8 |
| WSP8212 | Dual+ESD | N-Ch | 20 | 12 | 11 | 0.5 | 0.72 | 1 | - | - | 10 | 13 | 937 | 153 | 150 | SOP-8 |
| WSP9936 | Dual | N-Ch | 20 | 12 | 8 | 0.5 | 0.75 | 1.1 | - | - | 15 | 26 | 520 | 105 | 60 | SOP-8 |
| WSP4888 | Dual | N-Ch | 30 | 20 | 9.8 | 1.5 | 1.8 | 2.5 | 13.5 | 18 | 18 | 25 | 590 | 98 | 59 | SOP-8 |
| WSP4984 | Dual | N-Ch | 40 | 20 | 10 | 1.55 | 2.2 | 2.7 | 15 | 20 | 17.7 | 21 | 1500 | 250 | 135 | SOP-8 |
| WSP6956 | Dual | N-Ch | 60 | 20 | 10 | 1 | 1.5 | 2.5 | 15 | 20 | 18 | 24 | 1370 | 135 | 60 | SOP-8 |
| WSP11N10T | Dual | N-Ch | 100 | 20 | 12 | 1.2 | 1.8 | 2.5 | 70 | 95 | 80 | 115 | 1055 | 58 | 42 | SOP-8 |
| WSP4953A | Dual | P-Ch | -20 | 12 | -5.8 | -0.6 | -1.1 | -1.7 | 40 | 65 | 60 | 85 | 625 | 100 | 60 | SOP-8 |
| WSP4955 | Dual | P-Ch | -30 | 20 | -8 | -1.3 | -1.8 | -2.3 | 15 | 17 | 20 | 23 | 1004 | 204 | 154 | SOP-8 |
| WSP4077 | Dual | P-Ch | -40 | 20 | -12 | -1.2 | -1.7 | -1.5 | 15 | 19 | 19 | 26 | 2700 | 280 | 150 | SOP-8 |
| WSP6055 | Dual | P-Ch | -55 | 20 | -6.8 | -1 | -1.6 | -2.5 | 108 | 125 | 125 | 155 | 531 | 59 | 38 | SOP-8 |
| WSP6077 | Dual | P-Ch | -60 | 20 | -8 | -1 | -1.5 | -2.5 | 60 | 80 | 64 | 100 | 1400 | 95 | 70 | SOP-8 |
| WSP4626 | N+P | N-Ch | 20 | 10 | 6.7 | 0.4 | 0.72 | 1.2 | - | - | 21 | 28 | 910 | 230 | 163 | SOP-8 |
| | | P-Ch | -20 | 12 | -4.4 | -0.4 | -0.68 | -1.2 | - | - | 48 | 65 | 1415 | 134 | 102 | |
| WSP4620 | N+P | N-Ch | 30 | 20 | 8.8 | 1 | 1.5 | 2.5 | 18 | 24 | 25 | 32 | 572 | 81 | 65 | SOP-8 |
| | | P-Ch | -30 | 20 | -8.6 | -1 | -1.6 | -2.5 | 22 | 32 | 32 | 45 | 1415 | 134 | 102 | |
| WSP4065 | N+P | N-Ch | 40 | 20 | 10 | 1.5 | 1.9 | 2.5 | 16 | 18 | 20 | 22 | 915 | 98 | 85 | SOP-8 |
| | | P-Ch | -40 | 20 | -10 | -1.3 | -1.8 | -2.5 | 35 | 39 | 40 | 50 | 1105 | 105 | 95 | |
| WSP6067A | N+P | N-Ch | 60 | 20 | 7 | 1 | 2 | 3 | 38 | 52 | 55 | 75 | 1027 | 65 | 45 | SOP-8 |
| | | P-Ch | -60 | 20 | -5 | -1.2 | -1.75 | -2.5 | 80 | 100 | 100 | 115 | 1137 | 76 | 50 | |
| WSP85N10 | N+P | N-Ch | 100 | 20 | 4.5 | 1.2 | 2 | 2.5 | 100 | 110 | 110 | 150 | 445 | 32 | 16 | SOP-8 |
| | | P-Ch | -100 | 20 | -2.5 | -1.3 | -1.8 | -2.3 | 150 | 180 | 170 | 210 | 450 | 32 | 18 | |

主要VDS参数: ±20V/±30V/±40V/±60V/100V/150V等



MOS管/DFN5X6系列

| 型号 | 配置 | 沟道 | 最大漏极电压 | 最大栅源承受电压 | 最大漏源电流 | 开启阈值电压 | | | 导通电阻 | | | | 输入电容 | 输出电容 | 反向传输电容 | 封装 |
|----------------|---------------|------|---------|----------|-------------|------------|-------|------|-------------|------|-------|------|-----------|-----------|-----------|----------|
| Part number | Configuration | Type | VDS (V) | VGS ±(V) | ID (A) Max. | VGS(th)(v) | | | RDS(ON)(mΩ) | | | | Ciss (pF) | Coss (pF) | Crss (pF) | Package |
| | | | | | | Min. | Typ. | Max. | @10V | | @4.5V | | | | | |
| | | | | | | | | | Typ. | Max. | Typ. | Max. | | | | |
| WSD20100DN56 | Single | N-Ch | 20 | 12 | 90 | 0.5 | 0.68 | 1 | 1.6 | 2 | 1.9 | 2.5 | 4307 | 501 | 321 | DFN5X6-8 |
| WSD25280DN56G | Single | N-Ch | 25 | 20 | 280 | 1 | - | 2.5 | 0.7 | 0.9 | 1.4 | 1.9 | 7752 | 1120 | 650 | DFN5X6-8 |
| WSD3042DN56 | Single | N-Ch | 30 | 20 | 40 | 0.5 | 0.85 | 1.3 | 9 | 10.8 | 9.6 | 12 | 1150 | 120 | 85 | DFN5X6-8 |
| WSD30140DN56 | Single | N-Ch | 30 | 20 | 85 | 1.2 | 1.7 | 2.5 | 1.7 | 2.4 | 2.5 | 3.3 | 3000 | 1280 | 160 | DFN5X6-8 |
| WSD30100DN56 | Single | N-Ch | 30 | 20 | 100 | 1.5 | 1.8 | 2.5 | 3.3 | 4 | 4.6 | 6.2 | 1350 | 900 | 65 | DFN5X6-8 |
| WSD30150DN56 | Single | N-Ch | 30 | 20 | 150 | 1.4 | 1.7 | 2.5 | 1.8 | 2.4 | 2.4 | 3.2 | 3200 | 680 | 320 | DFN5X6-8 |
| WSD30300DN56G | Single | N-Ch | 30 | 20 | 300 | 1.2 | 1.8 | 2.5 | 0.7 | 0.9 | - | - | 11000 | - | - | DFN5X6-8 |
| WSD30350DN56G | Single | N-Ch | 30 | 20 | 350 | 1.2 | 1.5 | 2.5 | 0.48 | 0.62 | 0.72 | 0.95 | 7845 | 4525 | 139 | DFN5X6-8 |
| WSD4062DN56 | Single | N-Ch | 40 | 20 | 62 | 1.5 | 1.8 | 2.5 | 7 | 10.5 | 9 | 13.5 | 1150 | 140 | 90 | DFN5X6-8 |
| WSD4090DN56 | Single | N-Ch | 40 | 20 | 90 | 1.6 | 2.9 | 4.0 | 4 | 5.5 | 5.9 | - | 1492 | 391 | 59 | DFN5X6-8 |
| WSD40120DN56G | Single | N-Ch | 40 | 20 | 120 | 1.2 | 1.6 | 2.2 | 1.4 | 1.8 | 2 | 2.6 | 3972 | 1119 | 82 | DFN5X6-8 |
| WSD40190DN56G | Single | N-Ch | 40 | 20 | 190 | 1.0 | - | 2.5 | 1.25 | 1.6 | 1.8 | 2.7 | 5400 | 1200 | 180 | DFN5X6-8 |
| WSD6040DN56 | Single | N-Ch | 60 | 20 | 36 | 1 | 1.6 | 2.5 | 14 | 17.5 | 19 | 22 | 2100 | 140 | 100 | DFN5X6-8 |
| WSD6070DN56 | Single | N-Ch | 60 | 20 | 80 | 2 | 3 | 4.0 | 7.3 | 9 | - | - | 2680 | 386 | 160 | DFN5X6-8 |
| WSD100N06GDN56 | Single | N-Ch | 60 | 20 | 100 | 1.2 | 1.8 | 2.5 | 3 | 3.6 | 4.4 | 5.4 | 3458 | 1522 | 22 | DFN5X6-8 |
| WSD75100DN56 | Single | N-Ch | 75 | 25 | 100 | 2 | 3 | 4 | 5.3 | 6.4 | - | - | 3500 | 395 | 195 | DFN5X6-8 |
| WSD80100DN56 | Single | N-Ch | 80 | 20 | 100 | 2 | 3 | 4 | 6.1 | 8.5 | - | - | 4900 | 410 | 315 | DFN5X6-8 |
| WSD80130DN56 | Single | N-Ch | 80 | 20 | 130 | 2 | 3 | 4 | 2.7 | 3.6 | - | - | 4150 | 471 | 20 | DFN5X6-8 |
| WSD80120DN56 | Single | N-Ch | 85 | 25 | 120 | 2 | 3 | 4 | 3.7 | 4.8 | - | - | 3750 | 395 | 180 | DFN5X6-8 |
| WSD40N10GDN56 | Single | N-Ch | 100 | 20 | 40 | 1 | - | 2.5 | 16 | 20 | 22 | 26 | 1191 | 194 | 4.1 | DFN5X6-8 |
| WSD75N12GDN56 | Single | N-Ch | 120 | 20 | 75 | 2.5 | 3 | 3.5 | 6 | 6.8 | - | - | 4282 | 429 | 17 | DFN5X6-8 |
| WSD100N15DN56G | Single | N-Ch | 150 | 20 | 100 | 2 | 3 | 4 | 9 | 12 | - | - | 5450 | 1730 | 195 | DFN5X6-8 |
| WSD3048TDN56 | Dual | N-Ch | 30 | 20 | 50 | 1.5 | 1.8 | 2.5 | 4.8 | 5.5 | 7.2 | 9.5 | 1100 | 440 | 56 | DFN5X6-8 |
| WSD4078DN56 | Dual | N-Ch | 40 | 20 | 40 | 1.2 | 1.6 | 2.5 | 7 | 9.5 | 11 | 15 | 700 | 132 | 108 | DFN5X6-8 |
| WSD6056DN56 | Dual | N-Ch | 60 | 20 | 45 | 1.2 | 1.5 | 2.5 | 16 | 20 | 20 | 25 | 945 | 275 | 26 | DFN5X6-8 |
| WSD46N10DN56 | Dual | N-Ch | 100 | 20 | 40 | 1.2 | 1.5 | 2.5 | 14 | 20 | 18 | 30 | 1010 | 185 | 12 | DFN5X6-8 |
| WSD20L120DN56 | Single | P-Ch | -20 | 10 | -120 | -0.4 | -0.6 | -1 | - | - | 2.1 | 2.7 | 4950 | 380 | 290 | DFN5X6-8 |
| WSD30L90DN56 | Single | P-Ch | -30 | 25 | -90 | -1.3 | -1.8 | -2.3 | 5.2 | 6.4 | 8.6 | 12 | 3200 | 640 | 600 | DFN5X6-8 |
| WSD30L120DN56 | Single | P-Ch | -30 | 20 | -120 | -1.2 | -1.5 | -2.5 | 2.9 | 3.6 | 5 | 6.8 | 6100 | 1130 | 1110 | DFN5X6-8 |
| WSD30L120ADN56 | Single | P-Ch | -30 | 20 | -120 | -1.2 | -1.5 | -2.5 | 3.8 | 5 | 5.8 | 8.2 | 9400 | 100 | 767 | DFN5X6-8 |
| WSD40L60DN56 | Single | P-Ch | -40 | 20 | -60 | -1.2 | -1.7 | -2.5 | 10 | 14 | 14 | 21 | 3410 | 450 | 228 | DFN5X6-8 |
| WSD60P06DN56 | Single | P-Ch | -60 | 20 | -60 | -1 | -1.85 | -2.5 | 20 | 25 | 23 | 30 | 3300 | 265 | 125 | DFN5X6-8 |
| WSD90P06DN56 | Single | P-Ch | -60 | 20 | -90 | -1 | -1.85 | -2.5 | 10 | 14 | 13 | 18 | 4066 | 501 | 291 | DFN5X6-8 |
| WSD50P10ADN56 | Single | P-Ch | -100 | 20 | -40 | -1.2 | -1.4 | -2.5 | 62 | 81 | - | - | 2590 | 320 | 45 | DFN5X6-8 |
| WSD86P10DN56 | Single | P-Ch | -100 | 20 | -86 | -1.4 | -2.1 | -2.8 | 17 | 28 | - | - | 6105 | 728 | 258 | DFN5X6-8 |
| WSD30L88DN56 | Dual | P-Ch | -30 | 20 | -49 | -1.2 | -1.5 | -2.5 | 11.5 | 16 | 16 | 20 | 2135 | 282 | 255 | DFN5X6-8 |
| WSD3023DN56 | N+P | N-Ch | 30 | 20 | 14 | 1.3 | 1.8 | 2.3 | 14 | 18.5 | 17 | 25 | 545 | 95 | 55 | DFN5X6-8 |
| | | P-Ch | -30 | 20 | -12 | -1.3 | -1.8 | -2.3 | 23 | 32.5 | 32 | 42 | 580 | 105 | 72 | |
| WSD3067DN56 | N+P | N-Ch | 30 | 20 | 24 | 1.3 | 1.8 | 2.5 | 15 | 20 | 18 | 23 | 395 | 105 | 42 | DFN5X6-8 |
| | | P-Ch | -30 | 20 | -19.8 | -1.3 | -1.8 | -2.5 | 11 | 14 | 15 | 20 | 750 | 140 | 102 | |
| WSD4048DN56 | N+P | N-Ch | 40 | 20 | 34 | 1.5 | 2 | 2.5 | 14 | 21 | 18 | 25 | 810 | 90 | 60 | DFN5X6-8 |
| | | P-Ch | -40 | 20 | -24 | -1.5 | -2 | -2.5 | 32 | 38 | 46 | 62 | 1904 | 108 | 80 | |
| WSD27N10DN56 | N+P | N-Ch | 100 | 20 | 18 | 1.3 | 1.8 | 2.5 | 50 | 58 | 60 | 67 | 800 | 120 | 24 | DFN5X6-8 |
| | | P-Ch | -100 | 20 | -12 | -1.4 | -1.8 | -2.5 | 80 | 100 | 95 | 125 | 1410 | 85 | 60 | |



授权代理商

MOS管/DFN封装系列

| 型号 | 配置 | 沟道 | 最大漏极电压 | 最大栅源承受电压 | 最大漏源电流 | 开启阈值电压 | | | 导通电阻 | | | | 输入电容 | 输出电容 | 反向传输电容 | 封装 | | | |
|--------------|---------------|------|---------|----------|-------------|------------|-------|------|------------|------|-------|------|------|------|---------|-----------|------|------|------|
| | | | | | | VGS(th)(v) | | | VGS(th)(v) | | | | | | | | Ciss | Coss | Crss |
| | | | | | | Min. | Typ. | Max. | @10V | | @4.5V | | | | | | | | |
| Part number | Configuration | Type | VDS (V) | VGS ±(V) | ID (A) Max. | Typ. | Max. | Typ. | Max. | Typ. | Max. | (pF) | (pF) | (pF) | Package | | | | |
| WSD3070DN | Single | N-Ch | 25 | 20 | 70 | 1.2 | 1.6 | 2.5 | 3 | 4.5 | 4 | 6 | 2350 | 410 | 345 | DFN3X3-8 | | | |
| WSD3066DN | Single | N-Ch | 30 | 20 | 66 | 1.5 | 1.8 | 2.5 | 4.7 | 5.7 | 5.8 | 7.6 | 1320 | 610 | 112 | DFN3X3-8 | | | |
| WSD4050DN | Single | N-Ch | 40 | 20 | 50 | 1 | 1.5 | 2.5 | 7.4 | 9.5 | 10 | 12 | 1584 | 145 | 55 | DFN3X3-8 | | | |
| WSD6036DN | Single | N-Ch | 60 | 20 | 50 | 1 | 1.6 | 2.5 | 14 | 17.5 | 19 | 22 | 2100 | 140 | 100 | DFN3X3-8 | | | |
| WSD28N10DN | Single | N-Ch | 100 | 20 | 28 | 1 | 2 | 3 | 55 | 75 | - | - | 600 | - | - | DFN3X3-8 | | | |
| WSD2022DN | Dual | N-Ch | 20 | 8 | 22 | 0.4 | 0.52 | 1 | - | - | 16.2 | 21 | 1160 | 104 | 29 | DFN3X3-8 | | | |
| WSD3056DN | Dual | N-Ch | 30 | 20 | 35 | 1 | 1.8 | 2.5 | 10 | 13 | 14 | 18 | 620 | 85 | 30 | DFN3X3-8 | | | |
| WSD4066ADN | Dual | N-Ch | 40 | 20 | 14 | 1.2 | 1.8 | 2 | 14 | 17 | 17 | 20 | 815 | 95 | 60 | DFN3x3-8 | | | |
| WSD6035DN | Dual | N-Ch | 60 | 20 | 40 | 1.2 | 1.6 | 2.5 | 20 | 32 | 30 | 38 | 1370 | 85 | 64 | DFN3x3-8 | | | |
| WSD20L75DN | Single | P-Ch | -20 | 12 | -75 | -0.4 | -0.6 | -1 | - | - | 4.8 | 6 | 3500 | 577 | 445 | DFN3X3-8 | | | |
| WSD30L68DN | Single | P-Ch | -30 | 20 | -68 | -1.3 | -1.8 | -2.5 | 5.8 | 7.8 | 10 | 18 | 3415 | 245 | 131 | DFN3X3-8 | | | |
| WSD40L48DN | Single | P-Ch | -40 | 20 | -30 | -1.3 | -1.9 | -2.5 | 16 | 24 | 20 | 30 | 1760 | 228 | 185 | DFN3X3-8 | | | |
| WSD3045DN | N+P | N-Ch | 30 | 20 | 18 | 1.3 | 1.8 | 2.5 | 8.5 | 10.5 | 10 | 14 | 250 | 40 | 30 | DFN3X3-8 | | | |
| | N+P | P-Ch | -30 | 20 | -15.3 | -1 | -1.8 | -2.5 | 20 | 24 | 30 | 38 | 880 | 145 | 92 | DFN3X3-8 | | | |
| WSD23N10DN | N+P | N-Ch | 100 | 20 | 15 | 1.3 | 1.8 | 2.5 | 100 | 110 | 110 | 150 | 445 | 31 | 15 | DFN3X3-8 | | | |
| | N+P | P-Ch | -100 | 20 | -12 | -1.3 | -1.8 | -2.3 | 150 | 180 | 170 | 210 | 700 | 50 | 28 | DFN3X3-8 | | | |
| WSD2018BDN22 | Single | N-Ch | 12 | 8 | 12.3 | 0.4 | - | 1 | 8.6 | 11.5 | 12 | 18 | 850 | 180 | 95 | DFN2X2-6L | | | |
| WSD2018DN22 | Single | N-Ch | 20 | 10 | 12 | 0.4 | 0.7 | 1 | 10 | 15 | 13 | 18 | 1800 | 650 | 450 | DFN2X2-6L | | | |
| WSD2054DN22 | Dual | N-Ch | 20 | 8 | 5 | 0.4 | 0.75 | 1.2 | 50 | 65 | 65 | 75 | 450 | 70 | 43 | DFN2X2-6L | | | |
| WSD1216DN22 | Single | P-Ch | -12 | 8 | -9.4 | -0.4 | - | -0.9 | 15 | 20 | 20 | 27 | 1400 | 297 | 237 | DFN2X2-6L | | | |
| WSD8823DN22 | Single | P-Ch | -20 | 8 | -3.4 | -0.5 | -0.7 | -1.2 | 60 | 99 | 75 | 120 | 420 | 180 | 90 | DFN2X2-6L | | | |
| WSD4018DN22 | Single | P-Ch | -40 | 20 | -18 | -1 | -1.5 | -3 | 31 | 42 | - | - | 1560 | 116 | 97 | DFN2X2-6L | | | |
| WSD4280DN22 | Dual | P-Ch | -15 | 8 | -4.6 | -0.4 | -0.62 | -1.2 | 47 | 61 | 61 | 80 | 781 | 98 | 96 | DFN2X2-6L | | | |
| WSD2065DN22 | Dual | P-Ch | -20 | 8 | -3.5 | -0.5 | -0.7 | -1.2 | 60 | 99 | 75 | 120 | 420 | 180 | 90 | DFN2x2-6L | | | |
| WSD2098DN23 | Dual+ESD | N-Ch | 20 | 12 | 9.7 | 0.5 | 0.7 | 1 | 7 | 9 | 10.5 | 13.5 | 1470 | 258 | 202 | DFN2X3 | | | |
| WSD2067 | Dual+ESD | P-Ch | -20 | 8 | -3.5 | -0.5 | -0.7 | -1.2 | 60 | 99 | 75 | 120 | 420 | 180 | 90 | DFN3X2 | | | |
| WSD2010DN25 | Dual+ESD | N-Ch | 20 | 12 | 11 | 0.5 | 0.7 | 1 | 6 | 7.5 | 7.3 | 9.9 | 1470 | 258 | 202 | DFN2X5 | | | |
| WSD1614DN | Single | N-Ch | 20 | 8 | 1.4 | 0.4 | - | 1 | - | 230 | - | 305 | 43 | 9 | 6 | | | | |

主要VDS参数: -12V/±20V/±30V/±40V/±60V/80V±100V等



MOS管/TO252封装系列

WSWIN50K 授权代理商

| 型号 | 配置 | 沟道 | 最大漏极电压 | 最大栅源承受电压 | 最大漏源电流 | 开启阈值电压 | | | 导通电阻 | | | | 输入电容 | 输出电容 | 反向传输电容 | 封装 |
|-------------|---------------|------|------------|-------------|----------------|------------|-------|------|-------------|------|-------|------|--------------|--------------|--------------|-----------|
| Part number | Configuration | Type | VDS (V) | VGS ±(V) | ID (A) Max. | VGS(th)(v) | | | RDS(ON)(mΩ) | | | | Ciss (pF) | Coss (pF) | Crss (pF) | Package |
| | | | | | | Min. | Typ. | Max. | @10V | | @4.5V | | | | | |
| WSF3038 | Single | N-Ch | 30 | 20 | 38 | 1 | 1.5 | 2.5 | 15 | 20 | 22 | 35 | 550 | 68 | 55 | TO-252 |
| WSF3085 | Single | N-Ch | 30 | 20 | 85 | 1 | 1.5 | 2.5 | 4.5 | 5.5 | 7.8 | 9 | 2295 | 570 | 210 | TO-252 |
| WSF30100D | Single | N-Ch | 30 | 20 | 100 | 1 | 1.6 | 2.5 | 3.6 | 4.5 | 6.7 | 9.5 | 2100 | 326 | 282 | TO-252 |
| WSF30150A | Single | N-Ch | 30 | 20 | 145 | 1.2 | 1.6 | 2.5 | 2.2 | 3.5 | 3.1 | 4.2 | 2450 | 590 | 245 | TO-252 |
| WSF30160 | Single | N-Ch | 30 | 20 | 160 | 1.5 | 1.9 | 2.5 | 2.3 | 3 | 3.8 | 4.6 | 2450 | 590 | 245 | TO-252 |
| WSF4060 | Single | N-Ch | 40 | 20 | 60 | 1.2 | 1.6 | 2.5 | 7.2 | 9 | 9.2 | 13 | 1460 | 180 | 146 | TO-252 |
| WSF40130 | Single | N-Ch | 40 | 20 | 120 | 1.3 | 1.8 | 2.6 | 2.4 | 3.5 | 3.2 | 5 | 3495 | 1045 | 62 | TO-252 |
| WSF28N06 | Single | N-Ch | 60 | 20 | 28 | 1 | 2 | 3 | 28 | 40 | - | - | 830 | 85 | 64 | TO-252 |
| WSF40N06A | Single | N-Ch | 60 | 20 | 50 | 2 | 3 | 4 | 20 | 23 | 23 | 28 | 1680 | 115 | 85 | TO-252 |
| WSF60N06A | Single | N-Ch | 60 | 20 | 60 | 2 | 3 | 4 | 12 | 14 | 15 | 20 | 2498 | 185 | 80 | TO-252 |
| WSF80N06 | Single | N-Ch | 60 | 20 | 80 | 1 | 1.5 | 3 | 7.2 | 12 | - | - | 3230 | 260 | 180 | TO-252 |
| WSF60100 | Single | N-Ch | 60 | 20 | 98 | 2 | 3 | 4 | 5.3 | 6.4 | - | - | 4055 | 346 | 180 | TO-252 |
| WSF60120 | Single | N-Ch | 60 | 20 | 110 | 1.2 | - | 2.3 | 3 | 3.6 | 4.4 | 5.4 | 3458 | 1522 | 22 | TO-252 |
| WSF3410 | Single | N-Ch | 100 | 20 | 15 | 1.5 | 2 | 2.5 | 90 | 100 | 115 | 130 | 940 | 80 | 50 | TO-252 |
| WSF40N10 | Single | N-Ch | 100 | 20 | 26 | 2 | 3 | 4 | 32 | 45 | 40 | 85 | 1350 | 110 | 50 | TO-252 |
| WSF45N10G | Single | N-Ch | 100 | 20 | 45 | 2 | 3 | 4 | 14.5 | 19.5 | - | - | 1800 | 215 | 42 | TO-252 |
| WSF50N10 | Single | N-Ch | 100 | 20 | 50 | 1 | 2 | 3 | 22 | 28 | 24 | 32 | 2450 | 150 | 85 | TO-252 |
| WSF70N10D | Single | N-Ch | 100 | 20 | 60 | 1.5 | - | 2.5 | 9 | 10 | 12 | 14 | 1999 | 322 | 7.1 | TO-252 |
| WSF90N10 | Single | N-Ch | 100 | 20 | 90 | 1 | 1.6 | 2.5 | 6 | 9 | 10 | 15 | 2400 | 355 | 60 | TO-252 |
| WSF160N10 | Single | N-Ch | 100 | 20 | 160 | 1.2 | 1.8 | 2.5 | 3.6 | 4.4 | 5 | 6.5 | 5500 | 730 | 88 | TO-252 |
| WSF20N15 | Single | N-Ch | 150 | 25 | 20 | 2 | 3 | 4 | 65 | 75 | - | - | 1320 | 100 | 26 | TO-252 |
| WSF40N15 | Single | N-Ch | 150 | 25 | 40 | 2 | 3 | 4 | 32 | 40 | - | - | 2610 | 210 | 70 | TO-252 |
| WSF09N20G | Single | N-Ch | 200 | 20 | 9 | 1 | 1.8 | 2.5 | 210 | 250 | - | - | 509 | 51.2 | 3.2 | TO-252 |
| WSF20N20 | Single | N-Ch | 200 | 20 | 20 | 1 | 2 | 3 | 136 | 160 | - | - | 3100 | 210 | 150 | TO-252 |
| WSF25N20 | Single | N-Ch | 200 | 20 | 25 | 2 | 3 | 4 | 60 | 75 | - | - | 2350 | 155 | 45 | TO-252 |
| WSF10N40 | Single | N-Ch | 400 | 25 | 10 | 2 | - | 4 | 515 | 607 | - | - | 740 | 83 | 9 | TO-252 |
| WSF07N50 | Single | N-Ch | 500 | 30 | 7 | 2 | 3 | 4 | 1200 | 1500 | - | - | 700 | 94 | 12 | TO-252 |
| WSF4N65 | Single | N-Ch | 650 | 30 | 4 | 2 | 3 | 4 | 2600 | 3000 | - | - | 550 | 46 | 2.3 | TO-252 |
| WSF2N65 | Single | N-Ch | 650 | 30 | 2 | 2 | 3 | 4 | 4000 | 4800 | - | - | 310 | 39 | 6 | TO-252 |
| WSF70P02 | Single | P-Ch | -20 | 12 | -70 | -0.4 | -0.6 | -1.2 | - | - | 6.8 | 9 | 5783 | 520 | 445 | TO-252 |
| WSF30P60 | Single | P-Ch | -30 | 20 | -60 | -1 | -1.5 | -2.5 | 12 | 15 | 20 | 25 | 2215 | 310 | 237 | TO-252 |
| WSF90P03 | Single | P-Ch | -30 | 20 | -85 | -1 | -1.6 | -2.5 | 5 | 6 | 6 | 8 | 4448 | 808 | 521 | TO-252 |
| WSF50P04 | Single | P-Ch | -40 | 20 | -40 | -1 | -1.5 | -3 | 12 | 14 | 18.5 | 24 | 2960 | 370 | 310 | TO-252 |
| WSF30P06 | Single | P-Ch | -60 | 20 | -23.5 | -1 | -1.65 | -2.5 | 38 | 48 | 50 | 62 | 2980 | 245 | 155 | TO-252 |
| WSF45P06 | Single | P-Ch | -60 | 20 | -45 | -1 | -1.6 | -2.5 | 30 | 40 | 52 | 65 | 1914 | 158 | 116 | TO-252 |
| WSF55P06 | Single | P-Ch | -60 | 20 | -50 | -1 | -1.8 | -3 | 23 | 28 | - | - | 3017 | 180 | 126 | TO-252 |
| WSF35P10 | Single | P-Ch | -100 | 20 | -30 | -1.2 | -2 | -3 | 86 | 103 | - | - | 1780 | 120 | 68 | TO-252 |
| WSF45P10 | Single | P-Ch | -100 | 20 | -40 | -1 | -2 | -3 | 44 | 55 | 47 | 58.5 | 5720 | 790 | 450 | TO-252 |
| WSF7P20 | Single | P-Ch | -200 | 30 | -5.7 | -2 | - | -4 | 540 | 690 | - | - | 590 | 140 | 25 | TO-252 |
| WSF3055 | N+P | N-Ch | 30 | 20 | 24 | 1.3 | 1.8 | 2.3 | 15 | 20 | 18 | 23 | 395 | 105 | 42 | TO-252 |
| | | P-Ch | -30 | 20 | -19.8 | -1.3 | -1.8 | -2.3 | 11 | 14 | 15 | 20 | 750 | 142 | 102 | -4L |
| WSF4012 | N+P | N-Ch | 40 | 20 | 30 | 1.5 | 2 | 2.5 | 16 | 21 | 18 | 25 | 593 | 76 | 56 | TO-252 |
| | | P-Ch | -40 | 20 | -20 | -1.5 | -2 | -2.5 | 30 | 38 | 46 | 62 | 1004 | 108 | 80 | -4L |
| WSF6012 | N+P | N-Ch | 60 | 20 | 20 | 1 | - | 2.5 | 28 | 37 | 37 | 45 | 670 | 70 | 35 | TO-252 |
| | | P-Ch | -60 | 20 | -15 | -1 | - | -2.5 | 60 | 85 | 80 | 110 | 500 | 66 | 32 | -4L |
| WSF4022 | Dual | N-Ch | 40 | 20 | 20 | 1.1 | 1.6 | 2.5 | 16 | 21 | 18 | 25 | 815 | 95 | 60 | TO-252-4L |

主要VDS参数: ±20V/±30V/±40V/±60V/80V/±100V/±200V等





授权代理商

MOS管/TO封装系列

| 型号 Part number | 配置 Configuration | 沟道 Type | 最大漏极电压 VDS (V) | 最大栅源承受电压 VGS ±(V) | 最大漏源电流 ID (A) Max. | 开启阈值电压 VGS(th)(v) | | | 导通电阻 RDS(ON)(mΩ) | | | | 输入电容 Ciss (pF) | 输出电容 Coss (pF) | 反向传输电容 Crss (pF) | 封装 Package |
|-------------------|---------------------|------------|----------------------|-------------------------|--------------------------|----------------------|------|------|---------------------|------|-------|------|----------------------|----------------------|------------------------|---------------|
| | | | | | | Min. | Typ. | Max. | @10V | | @4.5V | | | | | |
| | | | | | | | | | Typ. | Max. | Typ. | Max. | | | | |
| WSK140N03 | Single | N-Ch | 30 | 20 | 140 | 1 | - | 2.5 | 4 | - | 6 | - | 3075 | 400 | 315 | TO-263 |
| WSK180N03 | Single | N-Ch | 30 | 20 | 180 | 1.2 | 1.5 | 2.5 | 2 | 2.8 | 2.6 | 3.5 | 5851 | 720 | 525 | TO-263 |
| WSK250N03 | Single | N-Ch | 30 | 20 | 250 | 1 | 1.8 | 3 | 1.8 | 2.5 | 2.5 | 3.5 | 10600 | 1156 | 732 | TO-263 |
| WSK180N04 | Single | N-Ch | 40 | 20 | 180 | 2 | 3 | 4 | 3 | 3.6 | - | - | 4426 | 1027 | 537 | TO-263 |
| WSK220N04 | Single | N-Ch | 40 | 20 | 220 | 2 | 3 | 4 | 2.5 | 3.2 | - | - | 5710 | 1463 | 595 | TO-263 |
| WSK140N06 | Single | N-Ch | 60 | 20 | 140 | 2 | 3 | 4 | 5.3 | 7 | - | - | 4136 | 340 | 260 | TO-263 |
| WSK96N08 | Single | N-Ch | 80 | 25 | 96 | 2 | 3 | 4 | 7 | 9 | - | - | 3800 | 389 | 250 | TO-263 |
| WSK140N08 | Single | N-Ch | 80 | 25 | 140 | 2 | 3 | 4 | 4.8 | 6 | - | - | 4687 | 665 | 235 | TO-263 |
| WSK200N08A | Single | N-Ch | 80 | 25 | 200 | 2 | 3 | 4 | 3 | 4 | - | - | 8154 | 1029 | 650 | TO-263 |
| WSK150N10 | Single | N-Ch | 100 | 25 | 150 | 2.5 | 3 | 4.5 | 3.7 | 4.2 | - | - | 4120 | 1250 | 65 | TO-263 |
| WSK160N15 | Single | N-Ch | 150 | 20 | 160 | 2 | 2.9 | 4 | 6.6 | 7.5 | - | - | 5240 | 412 | 30 | TO-263 |
| WSK92P06 | Single | P-Ch | -60 | 20 | -90 | -1.1 | -1.8 | -2.5 | 10 | 14 | 13 | 18 | 4066 | 501 | 291 | TO-263 |
| WSK290N04G6 | Single | N-Ch | 40 | 20 | 290 | 1 | 1.8 | 2.5 | 1.2 | 1.6 | 1.5 | 2.5 | 8102 | 945 | 410 | TO-263-6L |
| WSM350N04 | Single | N-Ch | 40 | 20 | 350 | 1.3 | 1.7 | 2.5 | 1 | 1.5 | 1.5 | 2 | 9500 | 4500 | 1200 | TOLL-8L |
| WSM400N06G | Single | N-Ch | 60 | 20 | 400 | 2 | 3.0 | 4 | 1.3 | 1.8 | - | - | 9200 | 1635 | 725 | TOLL-8L |
| WSM340N10G | Single | N-Ch | 100 | 20 | 340 | 2 | 3 | 4 | 1.6 | 2.3 | - | - | 13900 | 6160 | 220 | TOLL-8L |
| WSM180N15 | Single | N-Ch | 150 | 20 | 180 | 2 | 2.9 | 4 | 6.2 | 7.5 | - | - | 5240 | 412 | 30 | TOLL-8L |
| WSL220N08 | Single | N-Ch | 85 | 20 | 210 | 2 | 3.2 | 4 | 4 | 4.9 | - | - | 7600 | 720 | 346 | TO-247 |
| WSC60N03 | Single | N-Ch | 30 | 20 | 60 | 1 | 1.5 | 2.5 | 4.1 | 6.5 | 6.5 | 8 | 2330 | 460 | 230 | TO-251 |
| WSC40N06 | Single | N-Ch | 60 | 20 | 50 | 1.2 | 1.8 | 2.5 | 20 | 23 | 23 | 28 | 1680 | 115 | 85 | TO-251 |
| WSC15N10 | Single | N-Ch | 100 | 20 | 15 | 1.5 | 2 | 2.5 | 80 | 100 | 115 | 130 | 940 | 80 | 50 | TO-251 |
| WSC5N20 | Single | N-Ch | 200 | 30 | 5 | 2 | - | 4 | 490 | 580 | - | - | 255 | 30.2 | 2.3 | TO-251 |
| WSC4N65 | Single | N-Ch | 650 | 30 | 4 | 2 | 3 | 4 | 2600 | 3000 | - | - | 550 | 46 | 2.3 | TO-251 |
| WSC80P03 | Single | P-Ch | -30 | 20 | -75 | -1.5 | -1.8 | -3 | 5.4 | 9 | 8.9 | 15 | 5554 | 761 | 435 | TO-251 |
| WSR3090 | Single | N-Ch | 30 | 20 | 90 | 1 | 1.5 | 2.5 | 4.5 | 5.5 | 7.8 | 9 | 2295 | 570 | 210 | TO-220 |
| WSR150N04 | Single | N-Ch | 40 | 20 | 150 | 2 | 3 | 4 | 3 | 4 | - | - | 4950 | 530 | 321 | TO-220 |
| WSR170N04G | Single | N-Ch | 40 | 20 | 170 | 1.2 | 1.8 | 2.5 | 1.9 | 3 | - | - | 3950 | 1120 | 98 | TO-220 |
| WSR60N06D | Single | N-Ch | 60 | 20 | 60 | 1.2 | 1.8 | 2.5 | 13.5 | 20 | 19 | 30 | 2426 | 145 | 97 | TO-220 |
| WSR80N06 | Single | N-Ch | 60 | 20 | 80 | 2 | 3 | 4 | 9.1 | 11.5 | - | - | 2350 | 237 | 205 | TO-220 |
| WSR130N06 | Single | N-Ch | 60 | 20 | 130 | 1 | - | 2.5 | 3 | 3.5 | 3.5 | 4.5 | 5377 | 1666 | 77.7 | TO-220 |
| WSR80N08 | Single | N-Ch | 80 | 20 | 80 | 2 | - | 4 | 8.4 | 9.5 | - | - | 4800 | 1670 | 590 | TO-220 |
| WSR140N08 | Single | N-Ch | 80 | 25 | 140 | 2 | 3 | 4 | 4.8 | 6 | - | - | 4687 | 665 | 235 | TO-220 |
| WSR200N08A | Single | N-Ch | 80 | 25 | 200 | 2 | 3 | 4 | 3 | 4 | - | - | 8154 | 1029 | 650 | TO-220 |
| WSR180N08 | Single | N-Ch | 85 | 20 | 180 | 2 | 3 | 4 | 3.2 | 4 | - | - | 6750 | 945 | 258 | TO-220 |
| WSR3710 | Single | N-Ch | 100 | 20 | 60 | 3 | 4 | 5 | 14 | 18 | - | - | 1910 | 278 | 69 | TO-220 |
| WSR80N10 | Single | N-Ch | 100 | 25 | 85 | 2 | 3 | 4 | 10 | 13 | - | - | 2100 | 255 | 100 | TO-220 |
| WSR140N10 | Single | N-Ch | 100 | 25 | 140 | 2.5 | 3 | 4.5 | 3.7 | 4.2 | - | - | 4120 | 1250 | 65 | TO-220 |
| WSR180N10 | Single | N-Ch | 100 | 25 | 180 | 2.5 | 3 | 4.5 | 3 | 4 | - | - | 4120 | 1250 | 65 | TO-220 |
| WSR150N15 | Single | N-Ch | 150 | 20 | 150 | 2 | 2.9 | 4 | 6.6 | 7.5 | - | - | 5240 | 412 | 30 | TO-220 |
| WSR180N15 | Single | N-Ch | 150 | 20 | 180 | 2 | 2.9 | 4 | 6.2 | 7.5 | - | - | 5240 | 412 | 30 | TO-220 |
| WSR25N20 | Single | N-Ch | 200 | 20 | 25 | 1 | 1.5 | 2.5 | 60 | 75 | - | - | 4200 | 163 | 75 | TO-220 |
| WSR25N20G | Single | N-Ch | 200 | 20 | 36 | 3 | 3.8 | 5 | 57 | 68 | - | - | 2445 | 129 | 24 | TO-220 |
| WSR60N25 | Single | N-Ch | 250 | 25 | 55 | 2 | - | 5 | 60 | 72 | - | - | 4510 | 523 | 180 | TO-220 |
| WSR22N50F | Single | N-Ch | 500 | 30 | 20 | 2 | - | 4 | 250 | 30 | - | - | 2800 | 285 | 25 | TO-220 |
| WSR20N60 | Single | N-Ch | 600 | 30 | 20 | 3 | - | 5 | 190 | 250 | - | - | 1990 | 1185 | 34 | TO-220 |
| WSR10N65F | Single | N-Ch | 650 | 30 | 10 | 2 | 3 | 4 | 600 | 800 | - | - | 1120 | 130 | 4.9 | TO-220 |
| WSR20N65F | Single | N-Ch | 650 | 30 | 20 | 3 | - | 5 | 400 | 480 | - | - | 5150 | 264 | 24 | TO-220 |
| WSR30N65C | Single | N-Ch | 650 | 30 | 28 | 2.3 | 3 | 4 | 110 | 140 | - | - | 2070 | 120 | 0.5 | TO-220 |
| WSR58P06 | Single | P-Ch | -60 | 25 | -45 | -1.4 | -2.2 | -3.5 | 30 | 47 | 42 | 58 | 1350 | 180 | 85 | TO-220 |
| WSR80P06 | Single | P-Ch | -60 | 20 | -50 | -1.3 | - | -3 | 13 | 18 | 18 | 25 | 3635 | 224 | 141 | TO-220 |
| WSR88P06 | Single | P-Ch | -60 | 20 | -88 | -1 | -1.8 | -2.5 | 9 | 11 | 12 | 16 | 3500 | 600 | 25 | TO-220 |
| WSR98P06 | Single | P-Ch | -60 | 25 | -132 | -1.3 | -1.8 | -2.5 | 5.2 | 6.5 | 8.5 | 11.5 | 6095 | 1080 | 430 | TO-220 |
| WSR18P10 | Single+ESD | P-Ch | -100 | 20 | -25 | -1 | -1.5 | -3.5 | 80 | 100 | 100 | 115 | 2580 | 185 | 140 | TO-220 |
| WSR38P10 | Single | P-Ch | -100 | 20 | -35 | -1.2 | -1.7 | -2.5 | 78 | 95 | - | - | 3029 | 129 | 76 | TO-220 |
| WSR45P10 | Single | P-Ch | -100 | 20 | -40 | -1 | -2 | -3 | 44 | 55 | 47 | 58.5 | 5720 | 790 | 450 | TO-220 |
| WSR70P10 | Single | P-Ch | -100 | 25 | -70 | -2 | - | -4 | 18 | 25 | - | - | 4200 | 615 | 380 | TO-220 |

MOS管/SOT封装系列

W5WINSOK 授权代理商

| 型号 | 配置 | 沟道 | 最大漏极电压 | 最大栅源承受电压 | 最大漏源电流 | 开启阈值电压 | | | 导通电阻 | | | | 输入电容 | 输出电容 | 反向传输电容 | 封装 |
|-------------|--------------------|------|--------|----------|--------|------------|-------|------|-------------|------|-------|------|--------------|--------------|--------------|-----------|
| Part number | Configu- ration | Type | VDS | VGS | ID (A) | VGS(th)(v) | | | RDS(ON)(mΩ) | | | | Ciss (pF) | Coss (pF) | Crss (pF) | Package |
| | | | (V) | ±(V) | Max. | Min. | Typ. | Max. | @10V | | @4.5V | | | | | |
| | | | | | | | | | Typ. | Max. | Typ. | Max. | | | | |
| WST2304 | Single | N-Ch | 20 | 8 | 6.3 | 0.3 | 0.7 | 1 | - | - | 20 | 25 | 574 | 67 | 60 | SOT-23N |
| WST3400S | Single | N-Ch | 30 | 12 | 5.6 | 0.5 | 0.8 | 1 | - | - | 27 | 32 | 525 | 57 | 45 | SOT-23N |
| WST2N7002A | Single | N-Ch | 60 | 20 | 0.7 | 0.5 | - | 3 | 140 | 450 | 180 | 765 | 130 | 70 | 25 | SOT-23N |
| WST02N10A | Single | N-Ch | 100 | 20 | 2 | 1 | 1.9 | 2.5 | 230 | 280 | 260 | 320 | 152 | 17 | 10 | SOT-23N |
| WST2337 | Single | P-Ch | -15 | 12 | -5 | -0.45 | -0.7 | -1.2 | - | - | 28 | 45 | 1440 | 280 | 190 | SOT-23N |
| WST6402 | Single | P-Ch | -20 | 12 | -4.4 | -0.5 | -0.8 | -1.2 | - | - | 50 | 60 | 857 | 114 | 108 | SOT-23N |
| WST3403 | Single | P-Ch | -30 | 20 | -3.5 | -0.5 | -0.7 | -1.2 | - | - | 60 | 75 | 686 | 90.8 | 80.4 | SOT-23N |
| WST3400 | Single | N-Ch | 30 | 12 | 7 | 0.5 | 0.8 | 1.2 | - | - | 18 | 28 | 572 | 81 | 65 | SOT-23-3L |
| WST4040 | Single | N-Ch | 40 | 20 | 5.8 | 0.6 | 1 | 1.6 | 35 | 50 | 50 | 60 | 396 | 47 | 35 | SOT-23-3L |
| WST6066 | Single | N-Ch | 60 | 20 | 5.2 | 1 | 1.5 | 2.5 | 33 | 40 | 40 | 50 | 1027 | 65 | 46 | SOT-23-3L |
| WST02N30 | Single | N-Ch | 300 | 20 | 2 | 2 | 3 | 4 | 3000 | 4000 | - | - | 138 | 30 | 5 | SOT-23-3L |
| WST05N10L | Single | N-Ch | 100 | 20 | 3 | 0.5 | 1.2 | 1.7 | 120 | 145 | 145 | 170 | 650 | 25 | 20 | SOT-23-3L |
| WST02N20B | Single | N-Ch | 200 | 25 | 1.2 | 3 | 4 | 5 | 570 | 680 | - | - | 280 | 25 | 8.5 | SOT-23-3L |
| WST2333A | Single | P-Ch | -12 | 8 | -6 | -0.3 | -0.5 | -1 | - | - | 23 | 32 | 1025 | 220 | 187 | SOT-23-3L |
| WST2307 | Single | P-Ch | -30 | 20 | -5.8 | -1.2 | -1.8 | -2.5 | 51 | 52 | 70 | 90 | 583 | 100 | 80 | SOT-23-3L |
| WST4041 | Single | P-Ch | -40 | 20 | -6 | -0.8 | -1.2 | -2.2 | 30 | 40 | 40 | 58 | 420 | 77 | 55 | SOT-23-3L |
| WST03P06 | Single | P-Ch | -60 | 20 | -3.5 | -1 | -1.5 | -3 | 110 | 150 | 150 | 180 | 364 | 41 | 12 | SOT-23-3L |
| WST03P10 | Single | P-Ch | -100 | 20 | -3 | -1.2 | -1.9 | -3 | 300 | 350 | 320 | 450 | 550 | 56 | 35 | SOT-23-3L |
| WST6045 | Single | N-Ch | 60 | 20 | 5 | 1 | 2 | 3 | 40 | 50 | 45 | 65 | 540 | 56 | 26 | SOT-23-6L |
| WST02N20 | Single | N-Ch | 200 | 25 | 1.2 | 3 | 4 | 5 | 570 | 680 | - | - | 280 | 25 | 8.5 | SOT-23-6L |
| WST8205 | Dual | N-Ch | 20 | 12 | 5.8 | 0.5 | 0.7 | 1.2 | - | - | 24 | 28 | 625 | 69 | 61 | SOT-23-6L |
| WST3392 | Dual | N-Ch | 30 | 20 | 3.7 | 1 | 1.5 | 2 | - | - | 58 | 73 | 170 | 35 | 23 | SOT-23-6L |
| WST4044 | Dual | N-Ch | 40 | 20 | 4.4 | 1 | 1.5 | 2.6 | 28 | 38 | 40 | 50 | 452 | 51 | 38 | SOT-23-6L |
| WST2035 | Single | P-Ch | -20 | 8 | -4 | -0.3 | -0.56 | -1 | - | - | 37 | 50 | 1450 | 205 | 160 | SOT-23-6L |
| WST3035 | Single | P-Ch | -30 | 20 | -4.4 | -0.5 | -1 | -2.5 | 50 | 60 | 73 | 90 | 895 | 134 | 120 | SOT-23-6L |
| WST05P06 | Single | P-Ch | -60 | 20 | -4.9 | -0.5 | -0.8 | -1.2 | 68 | 85 | 80 | 110 | 430 | 41 | 25 | SOT-23-6L |
| WST2033 | Dual | P-Ch | -20 | 12 | -4.5 | -0.5 | -0.7 | -1 | - | - | 37 | 51 | 1355 | 225 | 150 | SOT-23-6L |
| WST2078 | N+P | N-Ch | 20 | 12 | 3.8 | 0.5 | 0.7 | 1 | - | - | 45 | 55 | 450 | 51 | 52 | SOT-23-6L |
| | | P-Ch | -20 | 12 | -4.5 | -0.3 | -0.5 | -1 | - | - | 65 | 85 | 600 | 68 | 57 | |
| WST3078 | N+P | N-Ch | 30 | 20 | 3.5 | 1.3 | 1.6 | 2.5 | 32 | 50 | 56 | 68 | 215 | 37 | 28 | SOT-23-6L |
| | | P-Ch | -30 | 20 | -3 | -1.3 | -1.6 | -2.5 | 78 | 100 | 120 | 170 | 229 | 42 | 33 | |
| WST2007 | Dual | N-Ch | 20 | 8 | 1.4 | 0.3 | 0.6 | 1 | - | - | 140 | 450 | 204 | 43.6 | 30 | SOT-363 |
| WST2006 | Dual | N-Ch | 30 | 20 | 0.17 | 1 | 1.5 | 2 | 5500 | 7500 | - | - | 22 | 11 | 2 | SOT-363 |
| WST2026 | Single | N-Ch | 20 | 12 | 2 | 0.5 | 0.8 | 1.5 | 27 | 31 | 40 | 51 | 391 | 87 | 60 | SOT-323 |
| WST3032 | Single | N-Ch | 30 | 20 | 0.2 | 1 | 1.5 | 2 | - | 5000 | - | 5.5 | 42 | 15 | 3 | SOT-323 |
| WST6006 | Single | N-Ch | 60 | 20 | 0.115 | 1 | 1.6 | 2.5 | 1400 | 7500 | - | - | 17 | 10 | 2.5 | SOT-323 |
| WST2005 | Single | P-Ch | -20 | 12 | -1.6 | -0.4 | -0.7 | -1 | - | - | 145 | 155 | 472 | 71 | 51 | SOT-323 |
| WST6008 | Single+ESD | N-Ch | 30 | 10 | 0.3 | 0.5 | 1 | 1.5 | - | - | 140 | 200 | 180 | 50 | 20 | SOT-523 |
| WST6003 | Single | P-Ch | -20 | 6 | 0.3 | -0.45 | - | - | - | - | 800 | 1200 | - | - | - | SOT-523 |
| WST6005 | Single | P-Ch | -20 | 8 | -0.75 | -0.35 | -0.6 | -1 | - | - | 280 | 520 | 78 | 24 | 20 | SOT-523 |
| WST2004 | Single | N-Ch | 20 | 8 | 0.6 | 0.35 | - | 1 | - | - | 240 | 450 | 88 | 15 | 10 | SOT-723 |
| WST2002 | Single+ESD | N-Ch | 30 | 20 | 0.6 | 1 | 1.85 | 2.5 | - | 7500 | - | - | 25 | 10 | 3 | SOT-723 |
| WSE9968 | Single | N-Ch | 100 | 20 | 4.2 | 1 | 1.5 | 3 | 80 | 100 | 85 | 130 | 740 | 45 | 24 | SOT-89 |
| WSE9968A | Single | N-Ch | 100 | 20 | 4.4 | 1 | 2 | 3 | 75 | 95 | 80 | 120 | 760 | 46 | 26 | SOT-89 |
| WSE3099 | Single | P-Ch | -30 | 20 | -5 | -1 | -1.5 | -2 | 53 | 65 | 80 | 98 | 625 | 100 | 60 | SOT-89 |

主要VDS参数：±20V/±30V/±40V/±60V/80V/±100V/±200V等

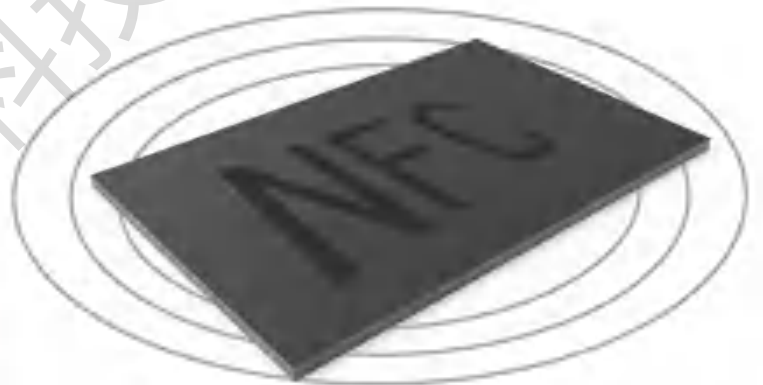


台湾RainSun 微波材料



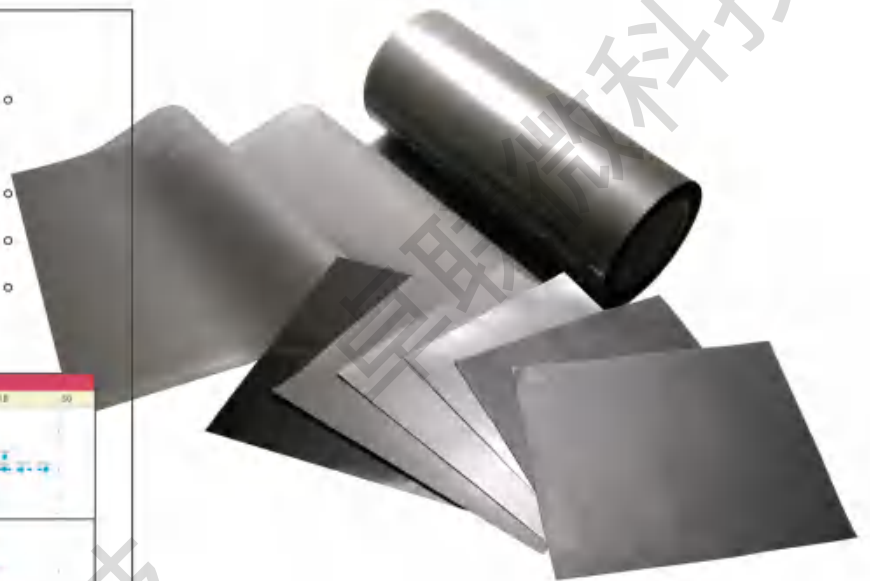
- ◆ 高透磁率材料
- ◆ 增加天线的磁场强度。
- ◆ 可依客户需求规格尺寸裁切。
- ◆ 材料配合机构设计弹性大。
- ◆ 适用于RFID & NFC无线通信。
- ◆ 有效隔绝环境，增加感应距离。
- ◆ 通过RoHS、GP认证。

Ferrite 铁氧体材料



NFC/RFID/无线充电应用

- ◆ 抑制电路噪声及内部干扰。
- ◆ 应用于行动通讯及电子产品。
- ◆ 高性能吸收噪声干扰。
- ◆ 复合材料，配合机构弹性大。
- ◆ 可依客户需求规格裁切尺寸。
- ◆ 通过ROHS认证 符合UL94-V0。



公司拥有资深无线射频工程师团队，能熟练运用网络分析仪、频谱仪等设备，为客户射频电路的 PCB layout、阻抗匹配、频率调试、效率分析提供支持，缩短开发时间，快速量产。

深圳市卓联微科技有限公司

SHENZHEN JOINTWEL TECHNOLOGY CO., LTD

📍 深圳市宝安区宝源路1009号宝安互联网产业基地A区5栋4楼3B02-3B06

📍 长沙市高新区岳麓西大道588号芯城科技园2栋1507室

📍 杭州市上城区新风路288号红街天城4幢1107

📞 133 6052 7304

☎ (+86) 0755-83047615

✉ thomas@jointwel.com.cn

🌐 www.jointwel.com.cn

